



Standard Detail Drawings

Nudura XR-35 with Dryvit ICF 500 Render System



Table of Contents

Description	Drawing number	Revision
Foundation detail options – including basements	XRD-01	0
Transition at ground level	XRD-02	0
Foundation & DPC detail	XRD-03	0
Intermediate floor /ceiling with joist hangers	XRD-04	0
Metal deck flooring detail	XRD-05	0
Eaves with sill plate	XRD-06	0
Eaves with anchoring plates	XRD-07	0
Low level roof /porch	XRD-08	0
Window jamb with illbruck i3 system	XRD-09	0
Window jamb with illbruck i3 system & check reveal	XRD-10	0
Window head with illbruck i3 system	XRD-11	0
Window head with illbruck i3 system & check reveal	XRD-12	0
Window sill	XRD-13	0
Door threshold	XRD-14	0
Party wall with 'T' straps & vertical fire break	XRD-15	0
Intermediate floor /ceiling with horizontal fire break	XRD-16	0
Internal stud wall	XRD-17	0
Internal block wall	XRD-18	0
Nudura extension on existing property	XRD-19	0
External corner detail	XRD-20	0
Internal corner detail	XRD-21	0
Render /brick slip transition – render above brick slips	XRD-22	0
Render /brick slip transition – render below brick slips	XRD-23	0

The recommendations relating to this detail drawing provided by Tremco CPG UK Ltd are for information /guidance purposes only and do not constitute professional advice. While we strive to offer accurate and up-to-date information, Tremco CPG UK makes no warranties, expressed or implied, regarding the completeness, accuracy, reliability, or suitability of the guidance /recommendations for any particular purpose.

Tremco CPG UK Ltd shall not be held liable for any direct, indirect, incidental, special or consequential damages arising out of or in connection with the use of the guidance /recommendations provided.

All systems must comply with National Building Regulations and Standards, it is the responsibility of the Architect, Engineer and Project Designer to evaluate the information and determine its applicability to their specific situation. The Architect, Engineer and Project Designer should seek professional advice tailored to their individual circumstances before making any decisions based on the recommendations.

Tremco CPG UK Ltd reserves the right to modify or discontinue any recommendations at any time without prior notice.

General Notes

The recommendations relating to this detail drawing provided by Tremco CPG UK Ltd are for information /guidance purposes only and do not constitute professional advice. While we strive to offer accurate and up-to-date information, Tremco CPG UK Ltd makes no warranties, expressed or implied, regarding the completeness, accuracy, reliability, or suitability of the guidance /recommendations for any particular purpose.

Tremco CPG UK Ltd shall not be held liable for any direct, indirect, incidental, special or consequential damages arising out of or in connection with the use of the guidance /recommendations provided.

All systems must comply with National Building Regulations and Standards, it is the responsibility of the Architect, Engineer and Project Designer to evaluate the information and determine its applicability to their specific situation. The Architect, Engineer and Project Designer should seek professional advice tailored to their individual circumstances before making any decisions based on the recommendations.

Tremco CPG UK Ltd reserves the right to modify or discontinue any recommendations at any time without prior notice.



Project

Standard Detail Drawing

Title

Nudura XR-35 Form Unit
Dryvit ICF 500 Render system
Foundation detail options -
Including Basements

Date

May 2025

Drg no

XRD-01

Scale

NTS

Drawn by

K. Millward



Construction Products Group

Tremco CPG UK Ltd,
Coupland Road,
Hindley Green,
Wigan, Lancs. WN2 4HP
www.cpg-europe.com

1. Geo-drainage membrane

2. Waterproof concrete

3. Compatible Type A membrane (Nudura membrane acceptable)

4. Water bar

5. Watertight sand /cement fillet

6. Granular fill for drainage

7. Drainage pipe as specified

8. Waterproofing membrane /radon barrier

9. Plasterboard finish

10. Nudura form unit as specified

11. Suitable cavity drain membrane

12. Corner strip /seal

13. Drainage channel with inspection points

14. Suitable high capacity drainage membrane

15. Floor screed

16. Nudura floor technology or equivalent

The above detail shows Types A, B and C waterproofing types as defined in BS 8102:2022. A minimum of 2 types (or in some instances 3) should be used to achieve the required protection.

General Notes

The recommendations relating to this detail drawing provided by Tremco CPG UK Ltd are for information /guidance purposes only and do not constitute professional advice. While we strive to offer accurate and up-to-date information, Tremco CPG UK Ltd makes no warranties, expressed or implied, regarding the completeness, accuracy, reliability, or suitability of the guidance /recommendations for any particular purpose.

Tremco CPG UK Ltd shall not be held liable for any direct, indirect, incidental, special or consequential damages arising out of or in connection with the use of the guidance /recommendations provided.

All systems must comply with National Building Regulations and Standards, it is the responsibility of the Architect, Engineer and Project Designer to evaluate the information and determine its applicability to their specific situation. The Architect, Engineer and Project Designer should seek professional advice tailored to their individual circumstances before making any decisions based on the recommendations.

Tremco CPG UK Ltd reserves the right to modify or discontinue any recommendations at any time without prior notice.



Project

Standard Detail Drawing

Title

Nudura XR-35 Form Unit
Dryvit ICF 500 Render system
Transition at ground level

Date

May 2025

Drg no

XRD-02

Scale

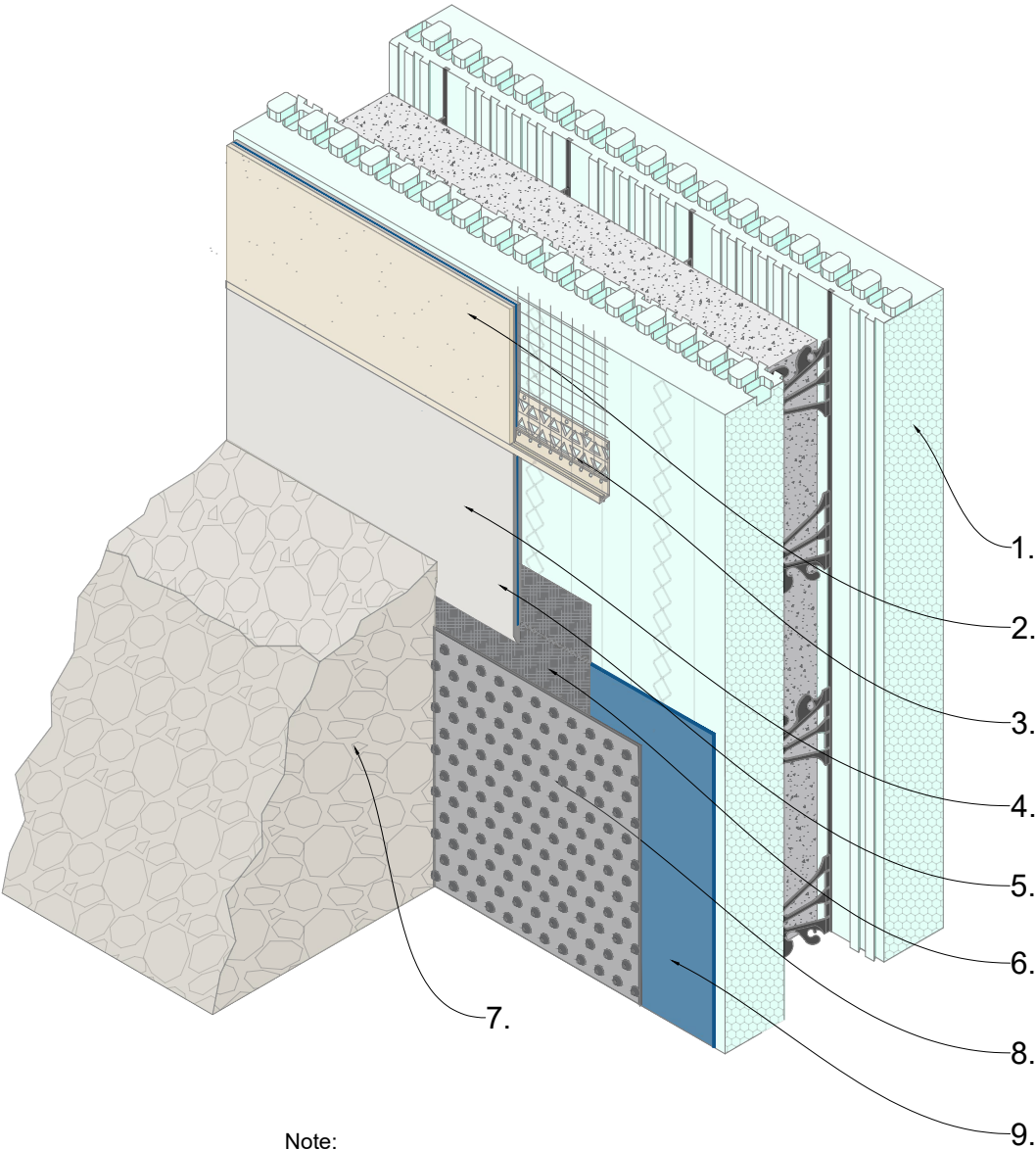
NTS

Drawn by

K. Millward

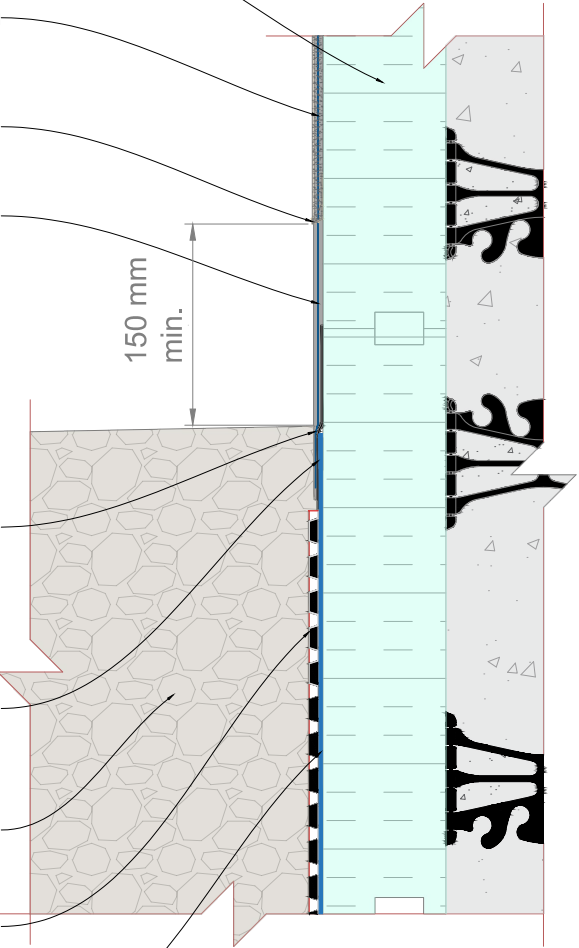


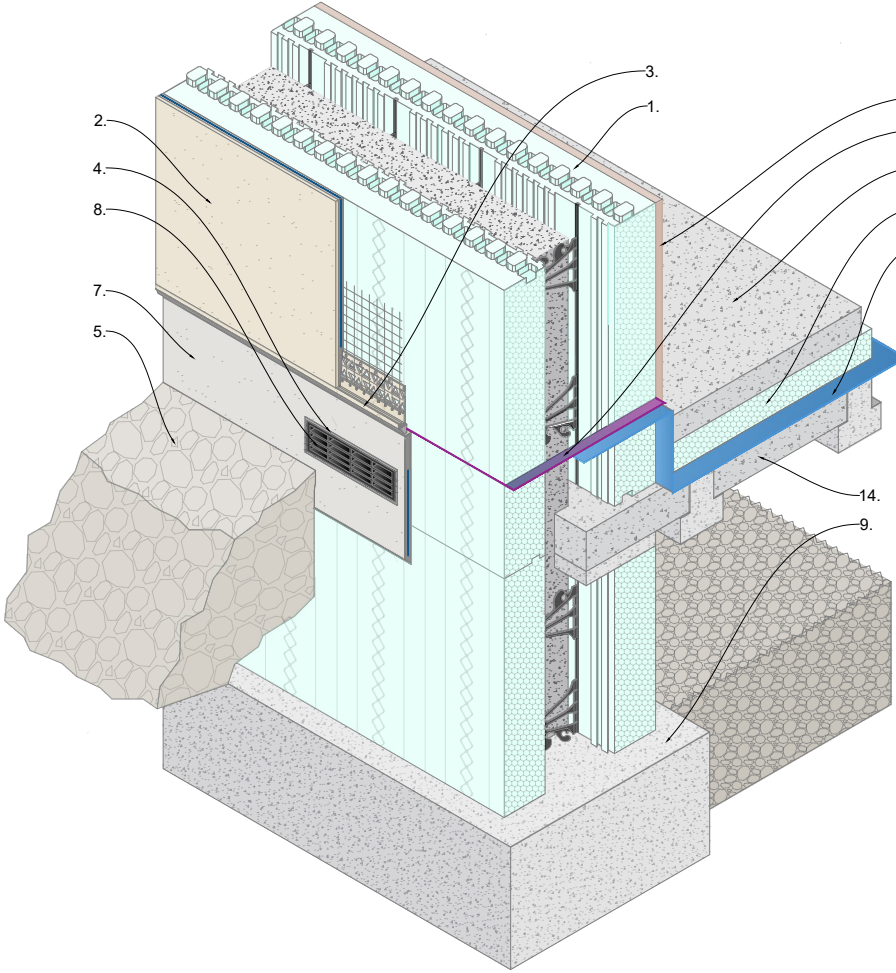
Tremco CPG UK Ltd,
Coupland Road,
Hindley Green,
Wigan, Lancs. WN2 4HP
www.cpg-europe.com



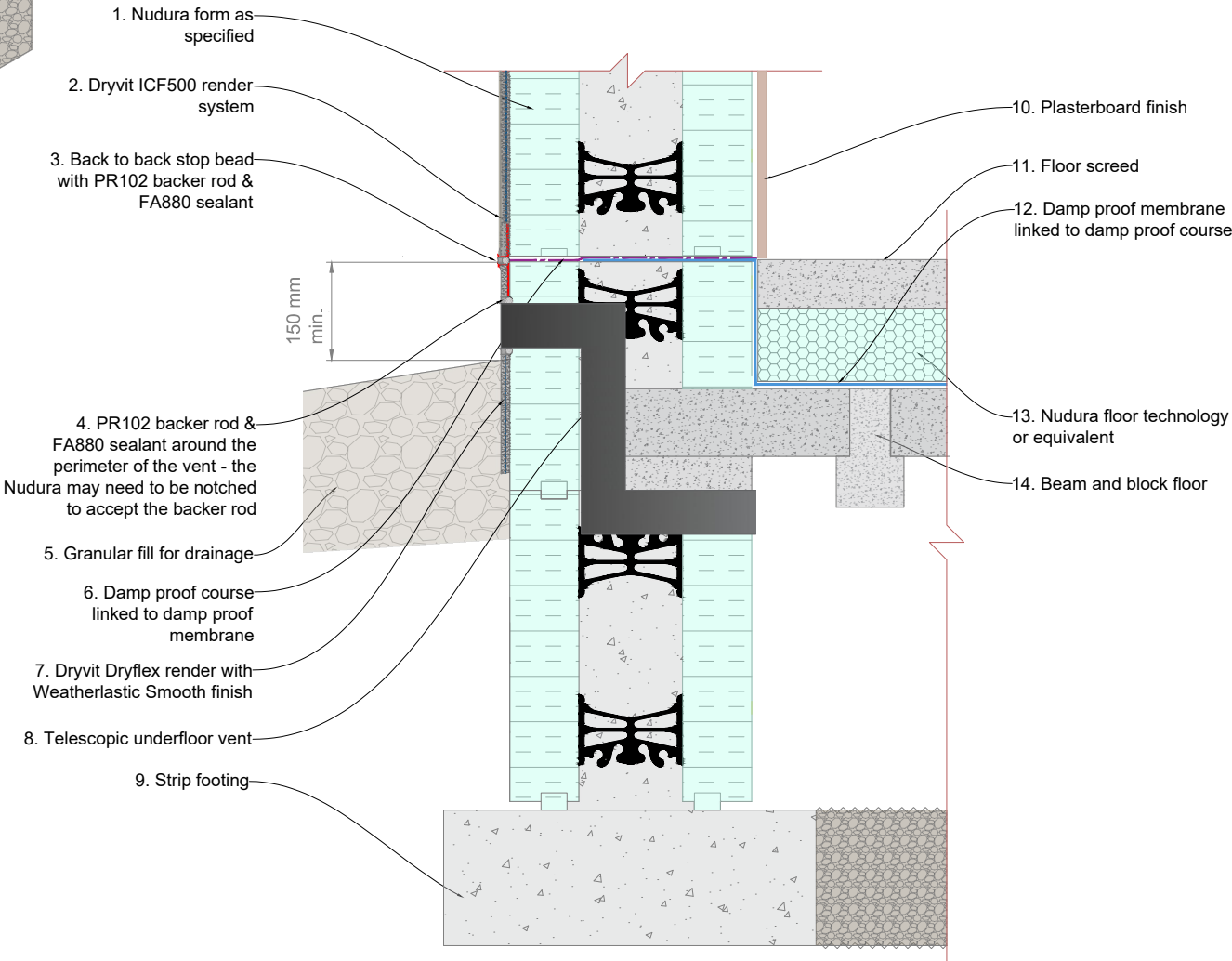
Note:
Render basecoat and finishes will not sufficiently adhere to membranes or DPCs (including Nudura peel and stick) and is likely to fail if applied over these items.

1. Nudura form unit
2. Dryvit ICF 500 render system (with Fibercoat Base coat)
3. Bellcast bead with mesh
4. Dryvit Dryflex base coat with mesh and finish (Weatherlastic Smooth preferable in this location) minimum 150 mm above ground.
5. Render lapped over ME508 membrane.
6. illbruck ME508 membrane lapped over peel & stick membrane
7. Granular fill for drainage
8. Dimpleboard membrane by others, installed as specified
9. Nudura waterproof membrane





Note:
Render basecoat and finishes will not sufficiently adhere to membranes or DPCs (including Nudura peel and stick) and is likely to fail if applied over these items.



General Notes

The recommendations relating to this detail drawing provided by Tremco CPG UK Ltd are for information /guidance purposes only and do not constitute professional advice. While we strive to offer accurate and up-to-date information, Tremco CPG UK Ltd makes no warranties, expressed or implied, regarding the completeness, accuracy, reliability, or suitability of the guidance /recommendations for any particular purpose.

Tremco CPG UK Ltd shall not be held liable for any direct, indirect, incidental, special or consequential damages arising out of or in connection with the use of the guidance /recommendations provided.

All systems must comply with National Building Regulations and Standards, it is the responsibility of the Architect, Engineer and Project Designer to evaluate the information and determine its applicability to their specific situation. The Architect, Engineer and Project Designer should seek professional advice tailored to their individual circumstances before making any decisions based on the recommendations.

Tremco CPG UK Ltd reserves the right to modify or discontinue any recommendations at any time without prior notice.



Project

Standard Detail Drawing

Title

Nudura XR-35 Form Unit
Dryvit ICF 500 Render system
Foundation & DPC detail

Date

May 2025

Drg no

XRD-03

Scale

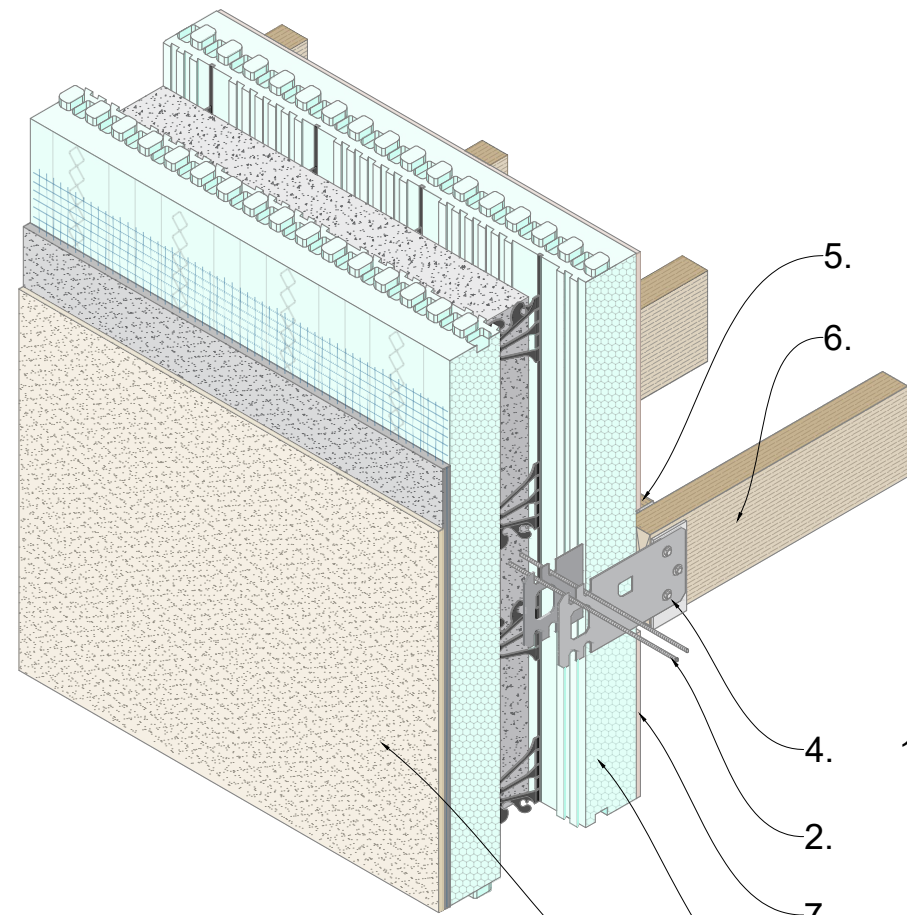
NTS

Drawn by

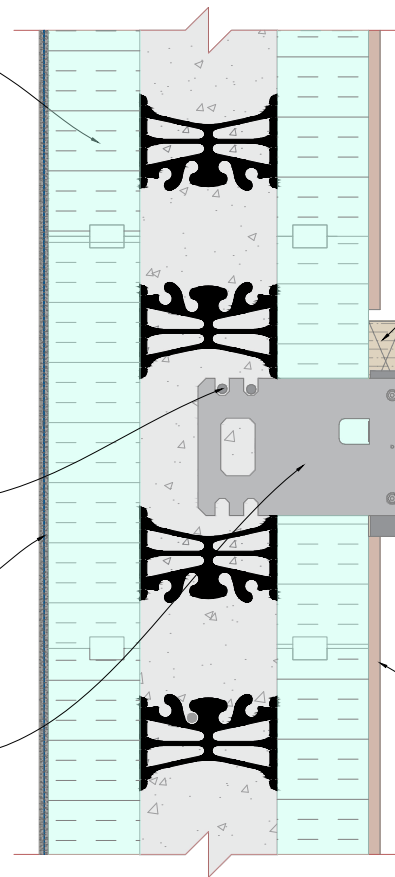
K. Millward



Tremco CPG UK Ltd,
Coupland Road,
Hindley Green,
Wigan, Lancs. WN2 4HP
www.cpg-europe.com



1. Nudura form unit
2. Rebar support
3. Dryvit ICF 500 render system
4. Proprietary embedded joist anchorage system or equivalent



5. Blocking between joists
6. Floor joists /trusses as specified
7. Plaster board

General Notes

The recommendations relating to this detail drawing provided by Tremco CPG UK Ltd are for information /guidance purposes only and do not constitute professional advice. While we strive to offer accurate and up-to-date information, Tremco CPG UK Ltd makes no warranties, expressed or implied, regarding the completeness, accuracy, reliability, or suitability of the guidance /recommendations for any particular purpose.

Tremco CPG UK Ltd shall not be held liable for any direct, indirect, incidental, special or consequential damages arising out of or in connection with the use of the guidance /recommendations provided.

All systems must comply with National Building Regulations and Standards, it is the responsibility of the Architect, Engineer and Project Designer to evaluate the information and determine its applicability to their specific situation. The Architect, Engineer and Project Designer should seek professional advice tailored to their individual circumstances before making any decisions based on the recommendations.

Tremco CPG UK Ltd reserves the right to modify or discontinue any recommendations at any time without prior notice.



Project

Standard Detail Drawing

Title

Nudura XR-35 Form Unit
Dryvit ICF 500 Render system
Intermediate floor /ceiling with joist hangers

Date

May 2025

Drg no

XRD-04

Scale

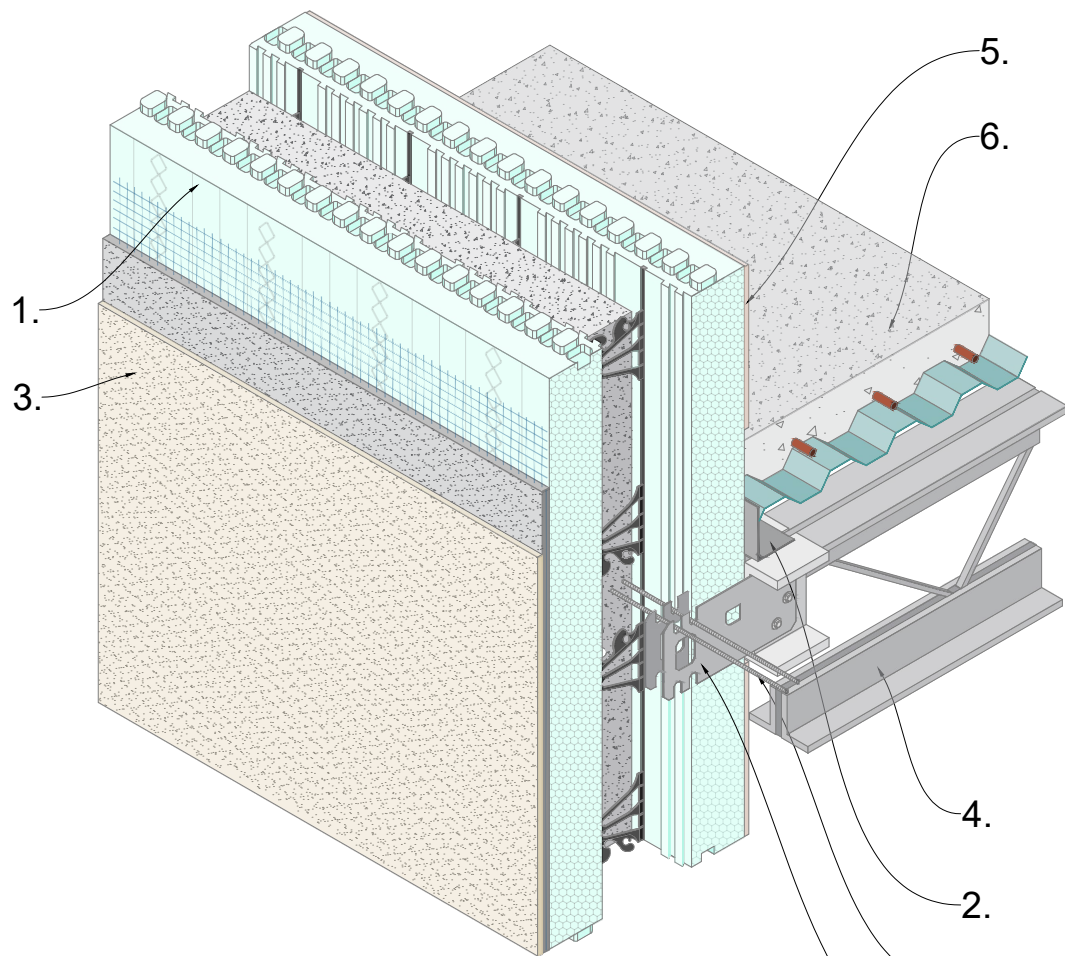
NTS

Drawn by

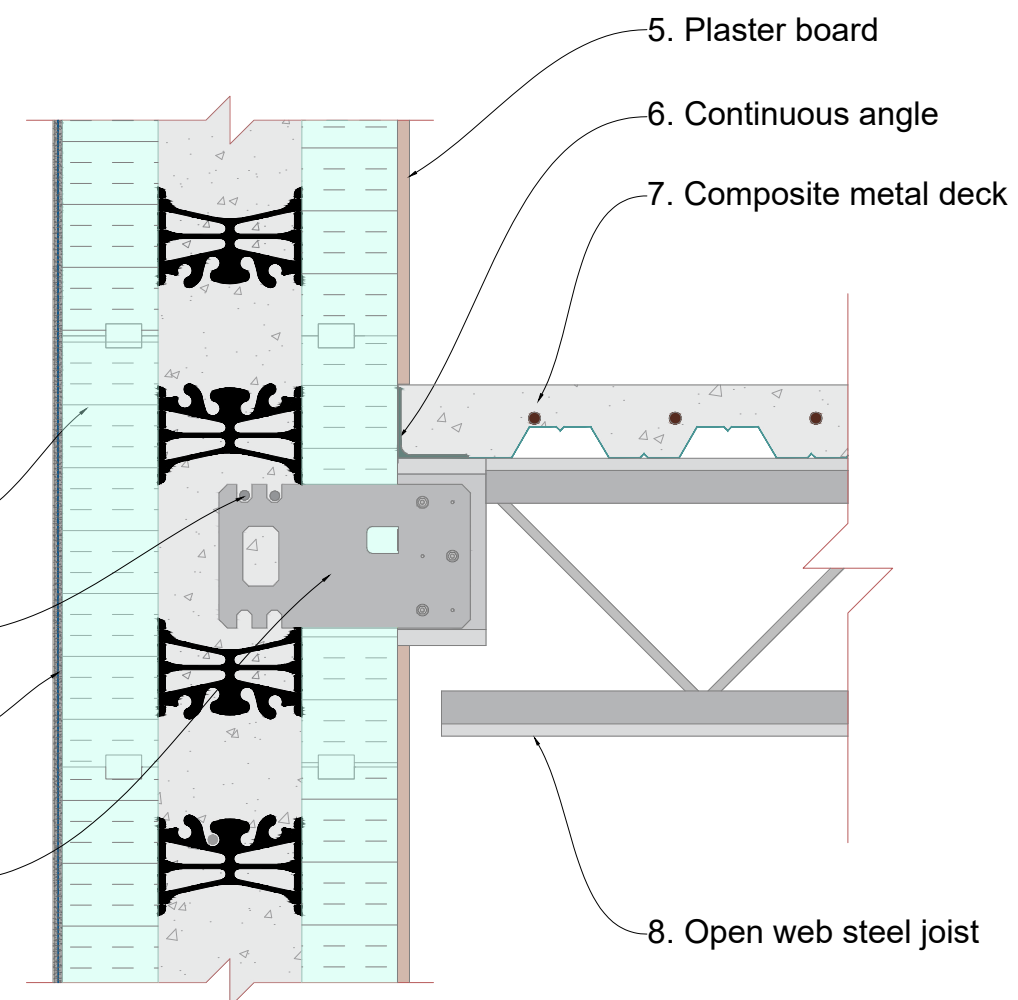
K. Millward



Tremco CPG UK Ltd,
Coupland Road,
Hindley Green,
Wigan, Lancs. WN2 4HP
www.cpg-europe.com



- 1. Nudura form unit
- 2. Rebar support
- 3. Dryvit ICF 500 render system
- 4. Proprietary embedded joist anchorage system or equivalent



- 5. Plaster board
- 6. Continuous angle
- 7. Composite metal deck
- 8. Open web steel joist

General Notes

The recommendations relating to this detail drawing provided by Tremco CPG UK Ltd are for information /guidance purposes only and do not constitute professional advice. While we strive to offer accurate and up-to-date information, Tremco CPG UK Ltd makes no warranties, expressed or implied, regarding the completeness, accuracy, reliability, or suitability of the guidance /recommendations for any particular purpose.

Tremco CPG UK Ltd shall not be held liable for any direct, indirect, incidental, special or consequential damages arising out of or in connection with the use of the guidance /recommendations provided.

All systems must comply with National Building Regulations and Standards, it is the responsibility of the Architect, Engineer and Project Designer to evaluate the information and determine its applicability to their specific situation. The Architect, Engineer and Project Designer should seek professional advice tailored to their individual circumstances before making any decisions based on the recommendations.

Tremco CPG UK Ltd reserves the right to modify or discontinue any recommendations at any time without prior notice.



Project
Standard Detail Drawing

Title
Nudura XR-35 Form Unit
Dryvit ICF 500 Render system
Metal deck flooring detail

Date May 2025	Drg no XRD-05
Scale NTS	Drawn by K. Millward



Tremco CPG UK Ltd,
Coupland Road,
Hindley Green,
Wigan, Lancs. WN2 4HP
www.cpg-europe.com

General Notes

The recommendations relating to this detail drawing provided by Tremco CPG UK Ltd are for information /guidance purposes only and do not constitute professional advice. While we strive to offer accurate and up-to-date information, Tremco CPG UK Ltd makes no warranties, expressed or implied, regarding the completeness, accuracy, reliability, or suitability of the guidance /recommendations for any particular purpose.

Tremco CPG UK Ltd shall not be held liable for any direct, indirect, incidental, special or consequential damages arising out of or in connection with the use of the guidance /recommendations provided.

All systems must comply with National Building Regulations and Standards, it is the responsibility of the Architect, Engineer and Project Designer to evaluate the information and determine its applicability to their specific situation. The Architect, Engineer and Project Designer should seek professional advice tailored to their individual circumstances before making any decisions based on the recommendations.

Tremco CPG UK Ltd reserves the right to modify or discontinue any recommendations at any time without prior notice.



Project

Standard Detail Drawing

Title

Nudura XR-35 Form Unit
Dryvit ICF 500 Render system
Eaves detail with rafter & sill plate

Date

May 2025

Drg no

XRD-06

Scale

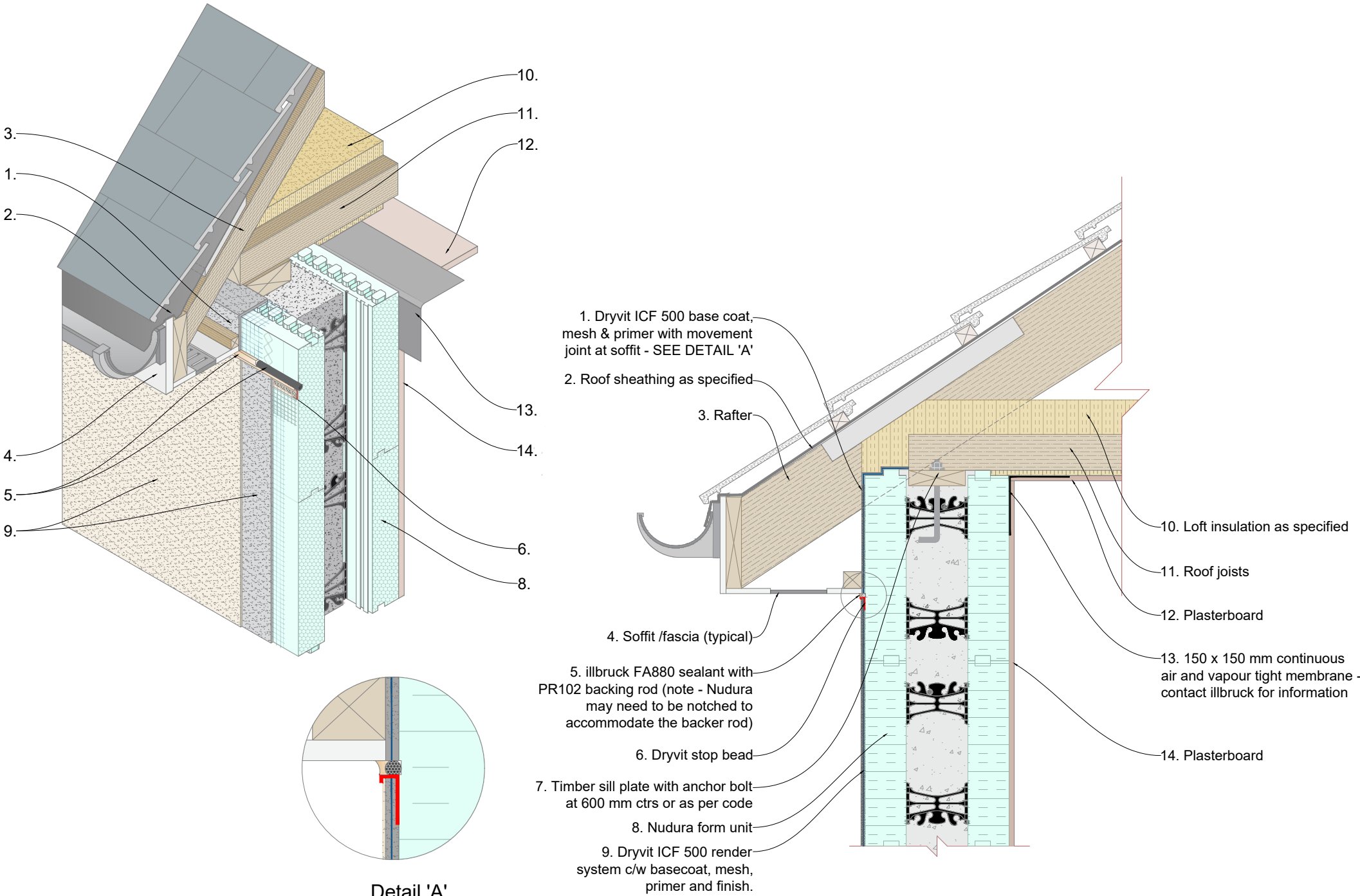
NTS

Drawn by

K. Millward



Tremco CPG UK Ltd,
Coupland Road,
Hindley Green,
Wigan, Lancs. WN2 4HP
www.cpg-europe.com



General Notes

The recommendations relating to this detail drawing provided by Tremco CPG UK Ltd are for information /guidance purposes only and do not constitute professional advice. While we strive to offer accurate and up-to-date information, Tremco CPG UK Ltd makes no warranties, expressed or implied, regarding the completeness, accuracy, reliability, or suitability of the guidance /recommendations for any particular purpose.

Tremco CPG UK Ltd shall not be held liable for any direct, indirect, incidental, special or consequential damages arising out of or in connection with the use of the guidance /recommendations provided.

All systems must comply with National Building Regulations and Standards, it is the responsibility of the Architect, Engineer and Project Designer to evaluate the information and determine its applicability to their specific situation. The Architect, Engineer and Project Designer should seek professional advice tailored to their individual circumstances before making any decisions based on the recommendations.

Tremco CPG UK Ltd reserves the right to modify or discontinue any recommendations at any time without prior notice.



Project
Standard Detail Drawing

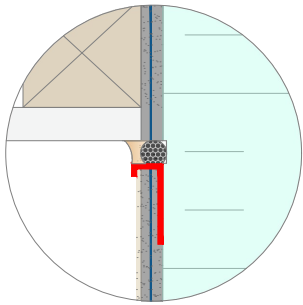
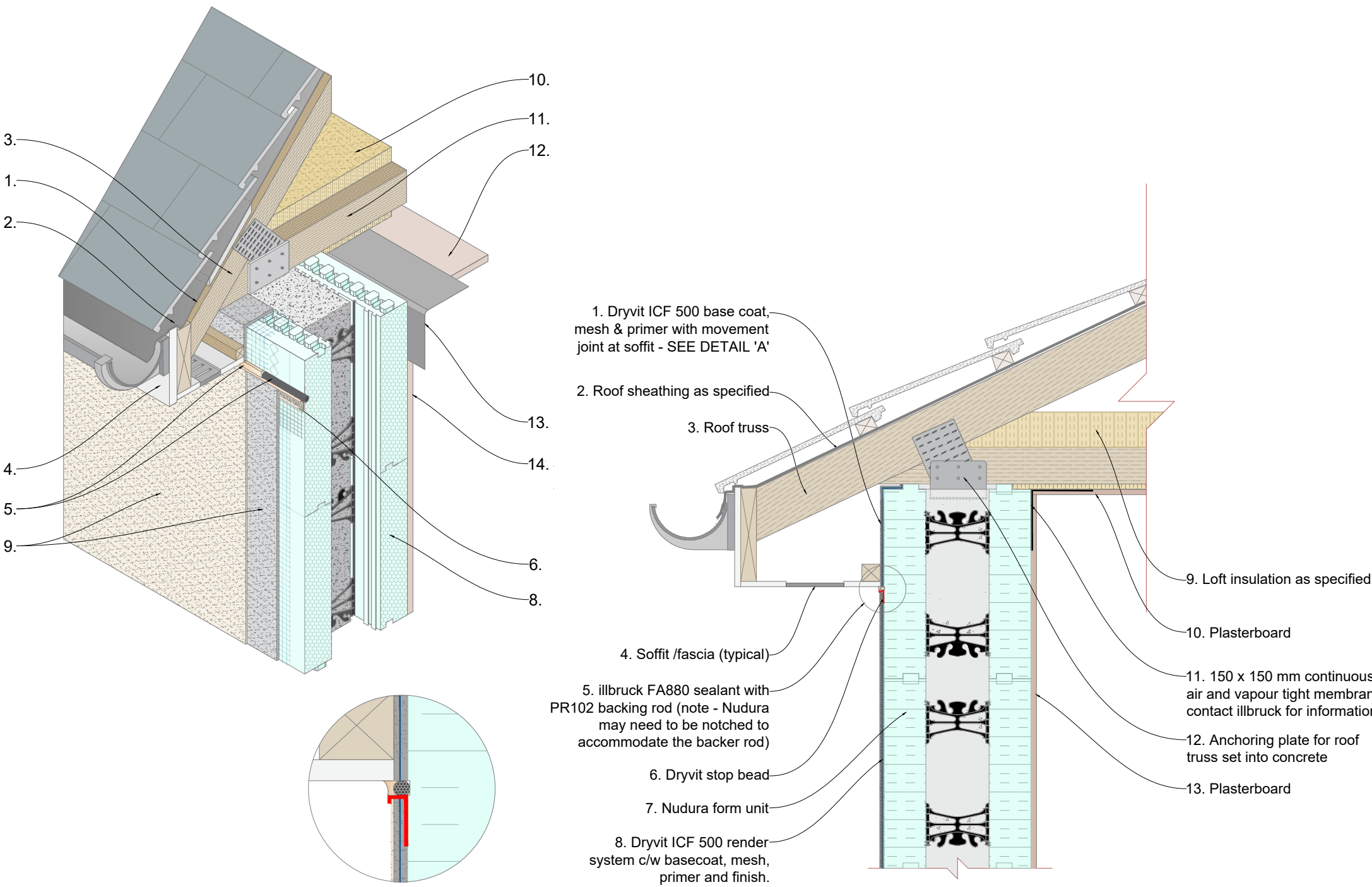
Title
Nudura XR-35 Form Unit
Dryvit ICF 500 Render system
Eaves detail with truss & anchoring plate

Date May 2025	Drg no XRD-07
------------------	------------------

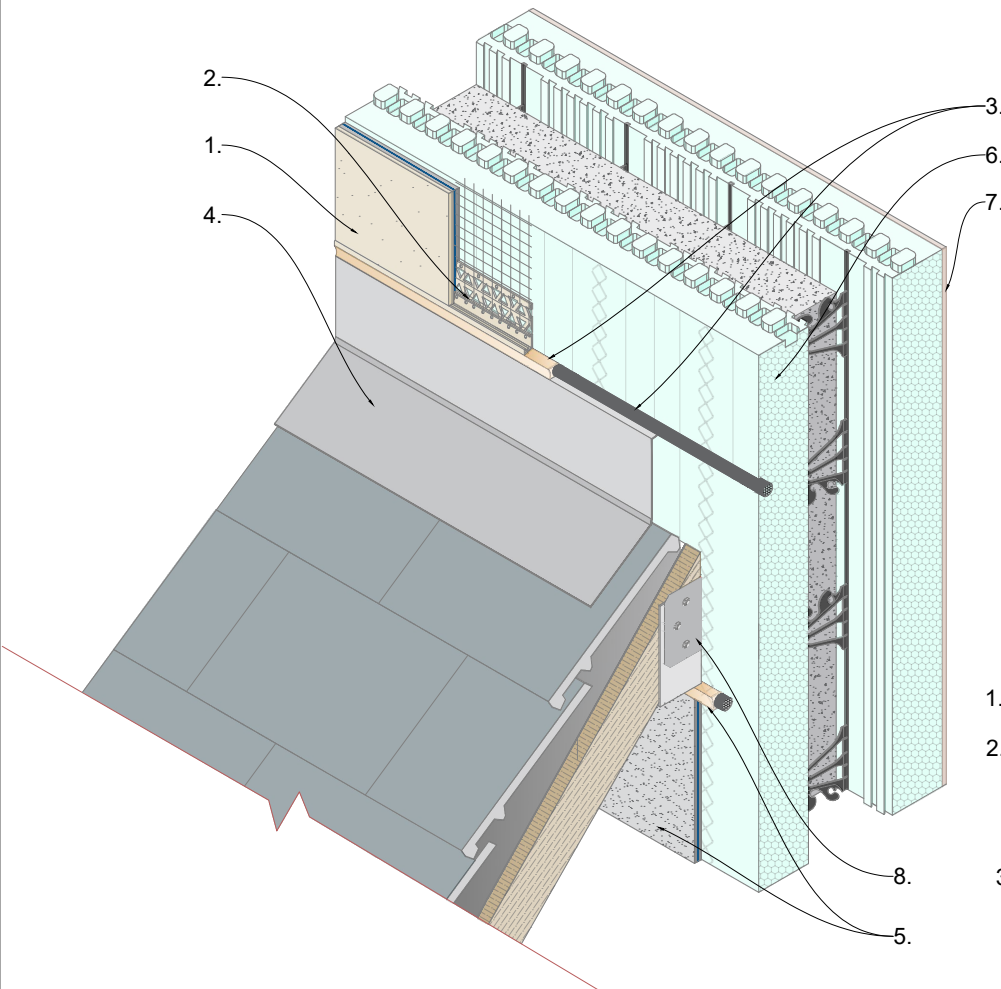
Scale NTS	Drawn by K. Millward
--------------	-------------------------



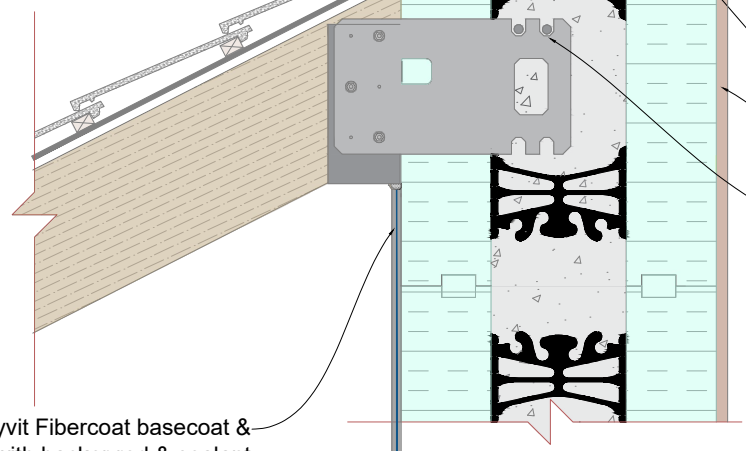
Tremco CPG UK Ltd,
Coupland Road,
Hindley Green,
Wigan, Lancs. WN2 4HP
www.cpg-europe.com



Detail 'A'



- 1. Dryvit ICF500 render system
- 2. Dryvit stop bead - positioned 50 mm min above low level pitched roof (150 mm above flat roof)
- 3. PR102 backer rod & FA600 sealant - note Nudura may need to be notched to accommodate the backer rod
- 4. Flashing as specified - chased into Nudura and fixed with a bead of illbruck FA600



- 5. Dryvit Fibercoat basecoat & mesh with backer rod & sealant installed around all protrusions (stop bead optional)

- 6. Nudura form unit
- 7. Internal plasterboard
- 8. Proprietary embedded joist anchorage system or equivalent with rebar

General Notes

The recommendations relating to this detail drawing provided by Tremco CPG UK Ltd are for information /guidance purposes only and do not constitute professional advice. While we strive to offer accurate and up-to-date information, Tremco CPG UK Ltd makes no warranties, expressed or implied, regarding the completeness, accuracy, reliability, or suitability of the guidance /recommendations for any particular purpose.

Tremco CPG UK Ltd shall not be held liable for any direct, indirect, incidental, special or consequential damages arising out of or in connection with the use of the guidance /recommendations provided.

All systems must comply with National Building Regulations and Standards, it is the responsibility of the Architect, Engineer and Project Designer to evaluate the information and determine its applicability to their specific situation. The Architect, Engineer and Project Designer should seek professional advice tailored to their individual circumstances before making any decisions based on the recommendations.

Tremco CPG UK Ltd reserves the right to modify or discontinue any recommendations at any time without prior notice.



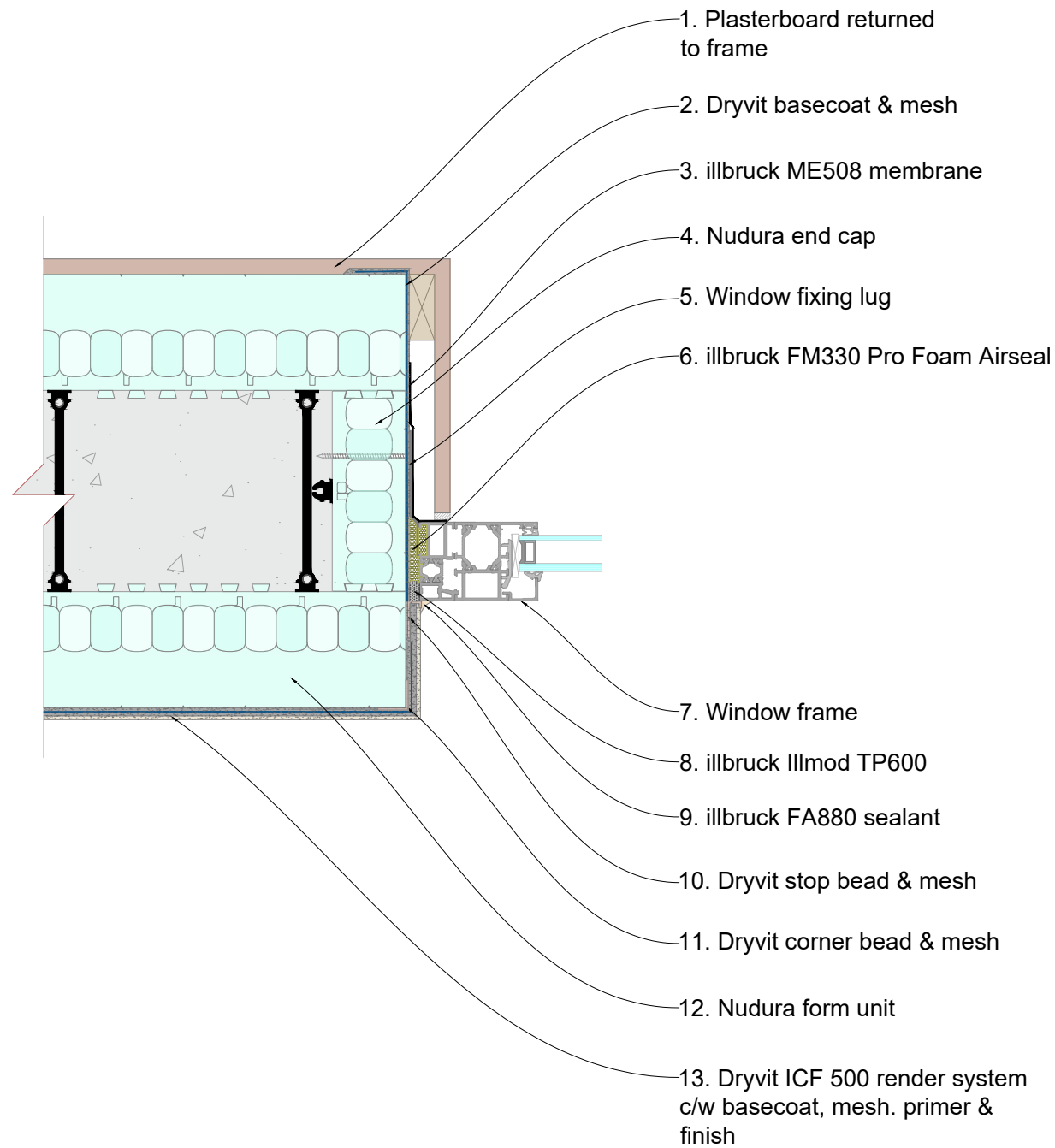
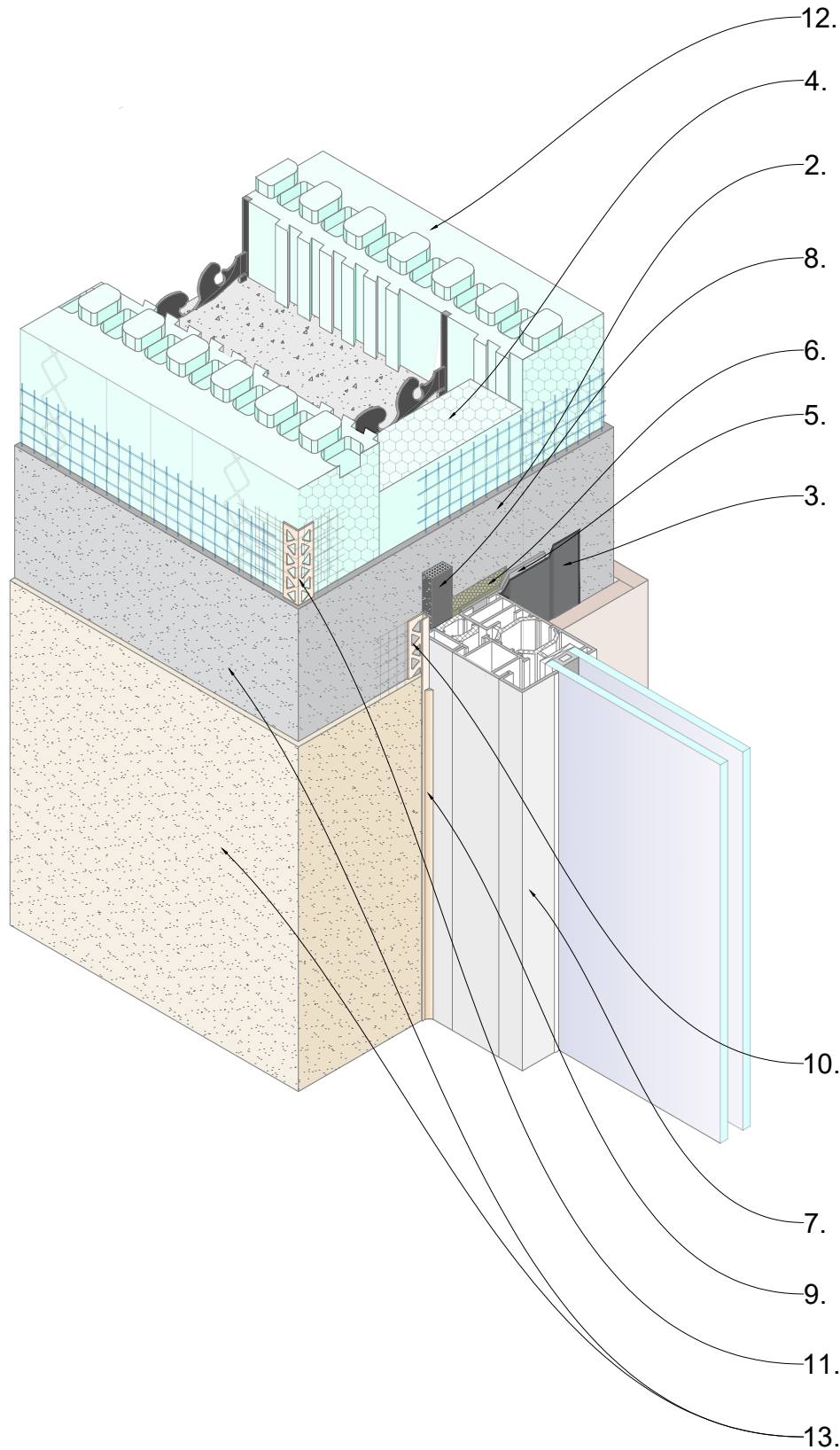
Project
Standard Detail Drawing

Title
Nudura XR-35 Form Unit
Dryvit ICF 500 Render system
Low level roof /porch

Date May 2025	Drg no XRD-08
Scale NTS	Drawn by K. Millward



Tremco CPG UK Ltd,
Coupland Road,
Hindley Green,
Wigan, Lancs. WN2 4HP
www.cpg-europe.com



General Notes

The recommendations relating to this detail drawing provided by Tremco CPG UK Ltd are for information /guidance purposes only and do not constitute professional advice. While we strive to offer accurate and up-to-date information, Tremco CPG UK Ltd makes no warranties, expressed or implied, regarding the completeness, accuracy, reliability, or suitability of the guidance /recommendations for any particular purpose.

Tremco CPG UK Ltd shall not be held liable for any direct, indirect, incidental, special or consequential damages arising out of or in connection with the use of the guidance /recommendations provided.

All systems must comply with National Building Regulations and Standards, it is the responsibility of the Architect, Engineer and Project Designer to evaluate the information and determine its applicability to their specific situation. The Architect, Engineer and Project Designer should seek professional advice tailored to their individual circumstances before making any decisions based on the recommendations.

Tremco CPG UK Ltd reserves the right to modify or discontinue any recommendations at any time without prior notice.



Project

Standard Detail Drawing

Title

Nudura XR-35 Form Unit
Dryvit ICF 500 Render system
Window jamb (i3 System)

Date

May 2025

Drg no

XRD-09

Scale

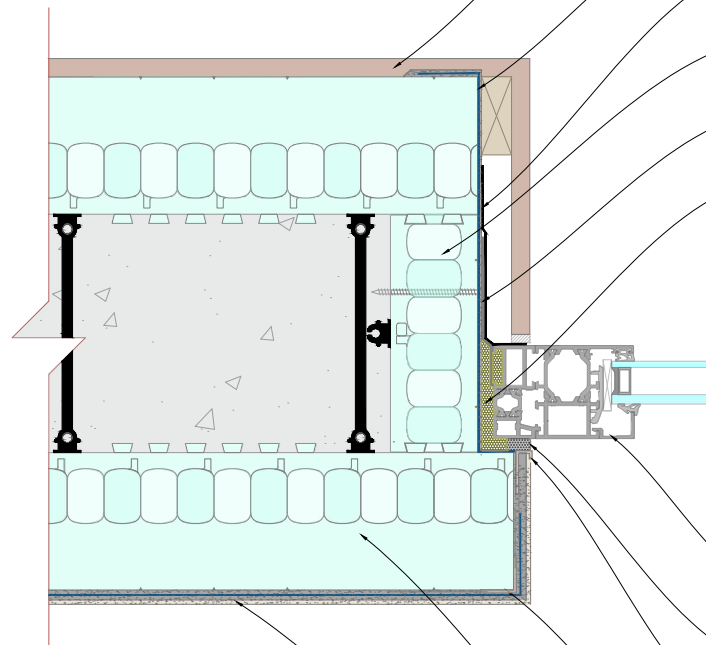
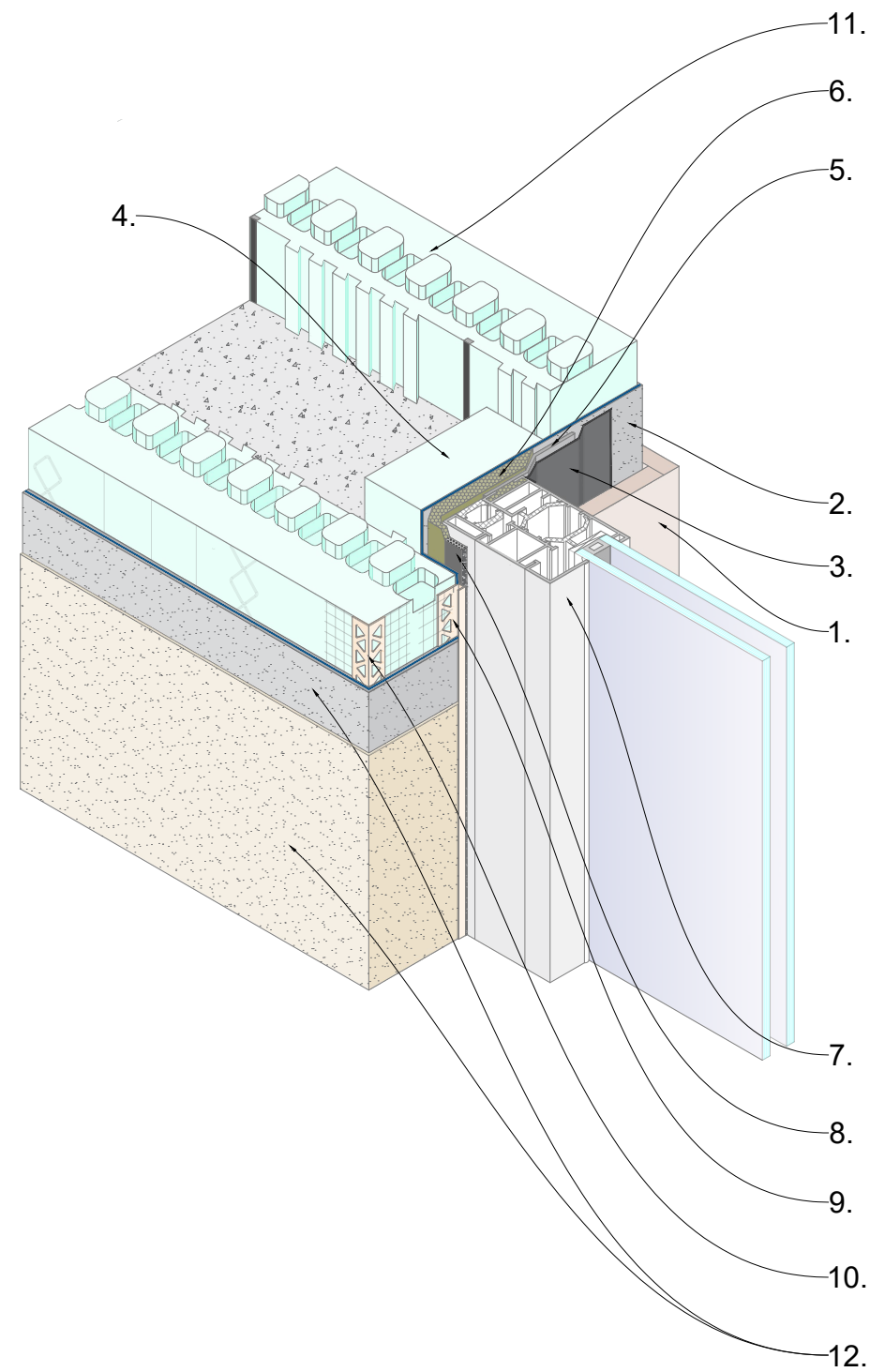
NTS

Drawn by

K. Millward



Tremco CPG UK Ltd,
Coupland Road,
Hindley Green,
Wigan, Lancs. WN2 4HP
www.cpg-europe.com



- 1. Plasterboard returned to frame
- 2. Dryvit basecoat & mesh
- 3. illbruck ME508 membrane
- 4. Nudura end cap
- 5. Window fixing lug
- 6. illbruck FM330 Pro Foam Airseal
- 7. Window frame
- 8. illbruck illmod TP600
- 9. Dryvit stop bead & mesh
- 10. Dryvit corner bead & mesh
- 11. Nudura form unit
- 12. Dryvit ICF 500 render system c/w basecoat, mesh, primer & finish

General Notes

The recommendations relating to this detail drawing provided by Tremco CPG UK Ltd are for information /guidance purposes only and do not constitute professional advice. While we strive to offer accurate and up-to-date information, Tremco CPG UK Ltd makes no warranties, expressed or implied, regarding the completeness, accuracy, reliability, or suitability of the guidance /recommendations for any particular purpose.

Tremco CPG UK Ltd shall not be held liable for any direct, indirect, incidental, special or consequential damages arising out of or in connection with the use of the guidance /recommendations provided.

All systems must comply with National Building Regulations and Standards, it is the responsibility of the Architect, Engineer and Project Designer to evaluate the information and determine its applicability to their specific situation. The Architect, Engineer and Project Designer should seek professional advice tailored to their individual circumstances before making any decisions based on the recommendations.

Tremco CPG UK Ltd reserves the right to modify or discontinue any recommendations at any time without prior notice.



Project
Standard Detail Drawing

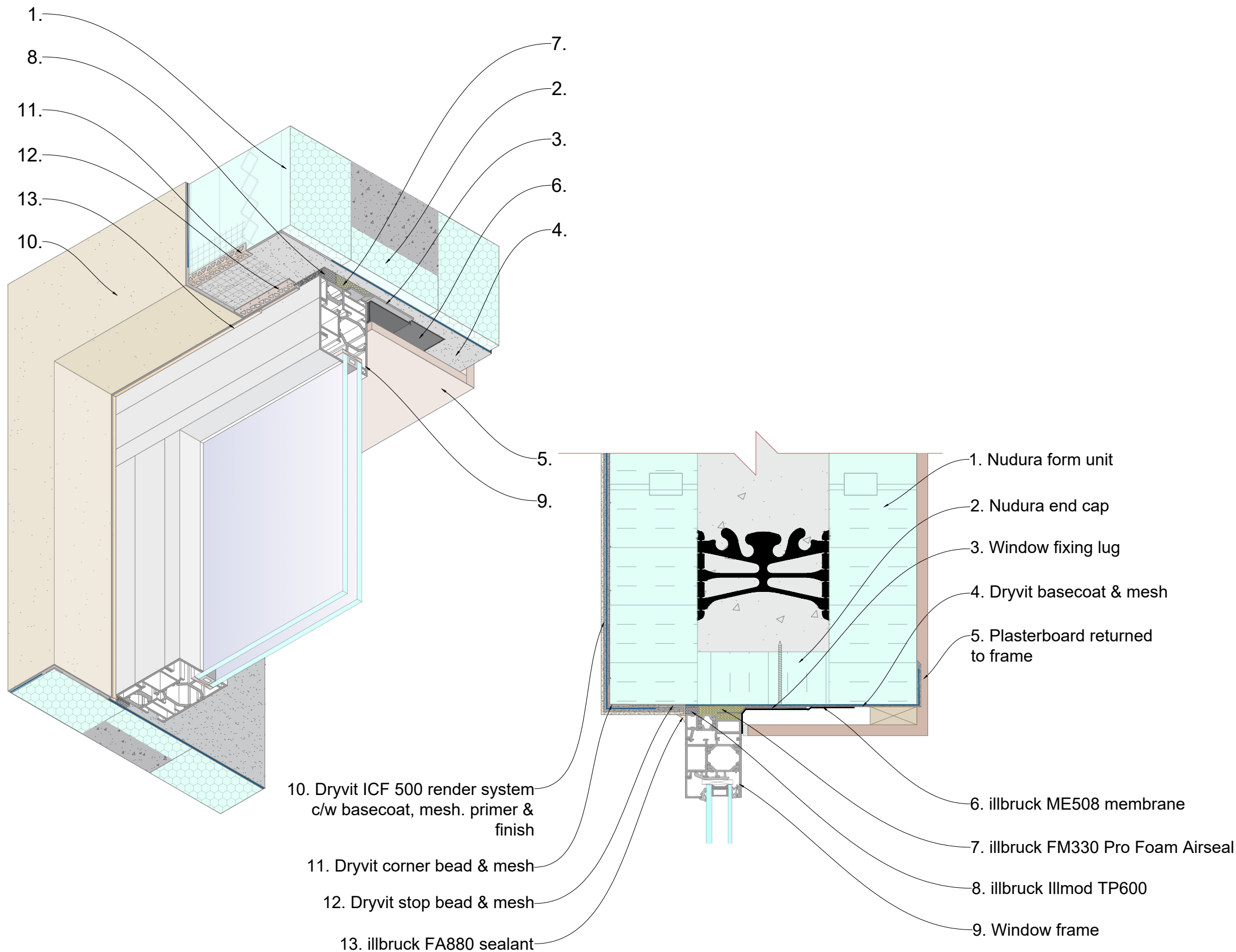
Title
Nudura XR-35 Form Unit
Dryvit ICF 500 Render system
Window jamb (i3 System) with check reveal

Date May 2025	Drg no XRD-10
------------------	------------------

Scale NTS	Drawn by K. Millward
--------------	-------------------------



Tremco CPG UK Ltd,
Coupland Road,
Hindley Green,
Wigan, Lancs. WN2 4HP
www.cpg-europe.com



General Notes

The recommendations relating to this detail drawing provided by Tremco CPG UK Ltd are for information /guidance purposes only and do not constitute professional advice. While we strive to offer accurate and up-to-date information, Tremco CPG UK Ltd makes no warranties, expressed or implied, regarding the completeness, accuracy, reliability, or suitability of the guidance /recommendations for any particular purpose.

Tremco CPG UK Ltd shall not be held liable for any direct, indirect, incidental, special or consequential damages arising out of or in connection with the use of the guidance /recommendations provided.

All systems must comply with National Building Regulations and Standards, it is the responsibility of the Architect, Engineer and Project Designer to evaluate the information and determine its applicability to their specific situation. The Architect, Engineer and Project Designer should seek professional advice tailored to their individual circumstances before making any decisions based on the recommendations.

Tremco CPG UK Ltd reserves the right to modify or discontinue any recommendations at any time without prior notice.



Project

Standard Detail Drawing

Title

Nudura XR-35 Form Unit
Dryvit ICF 500 Render system
Window head (i3 System)

Date

May 2025

Drg no

XRD-11

Scale

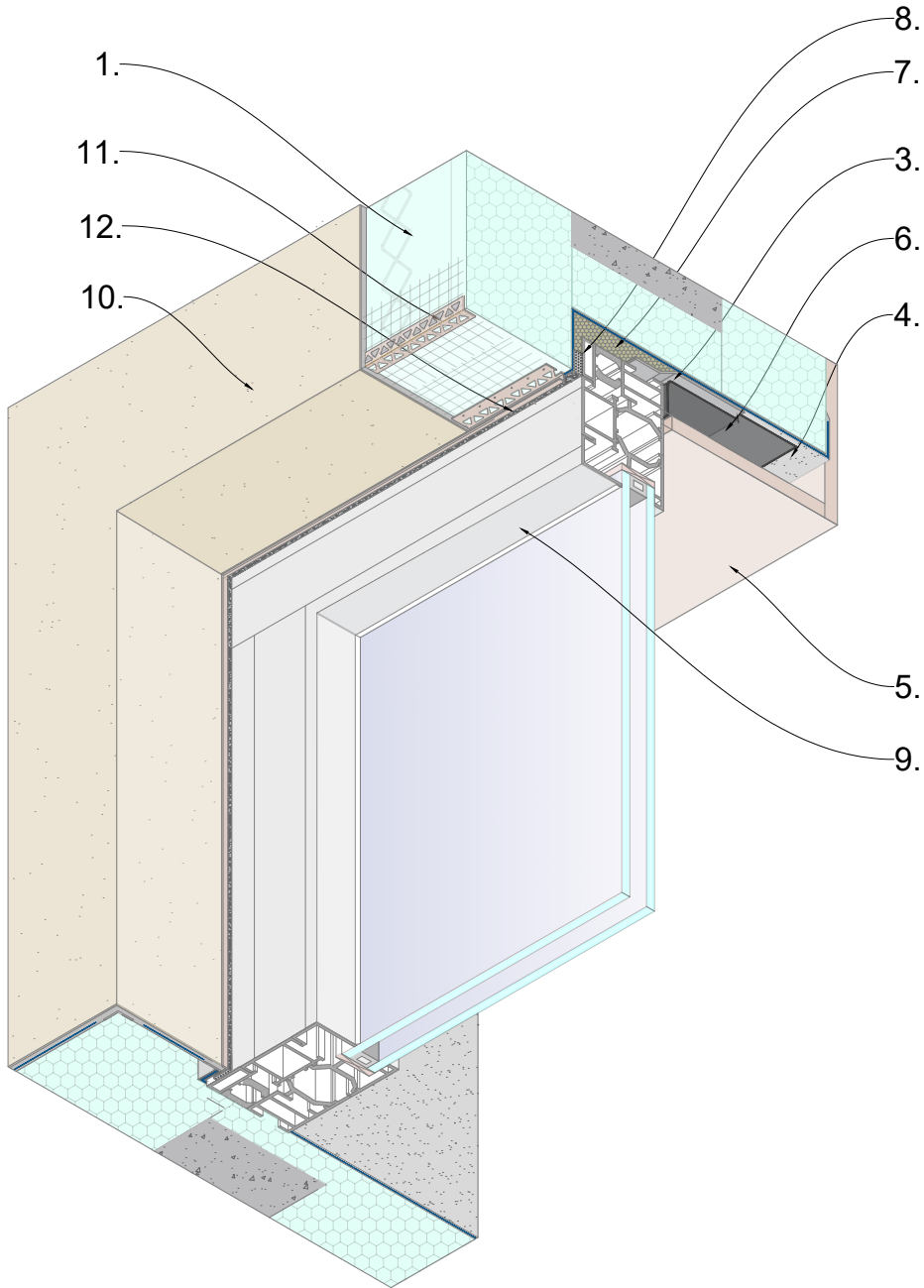
NTS

Drawn by

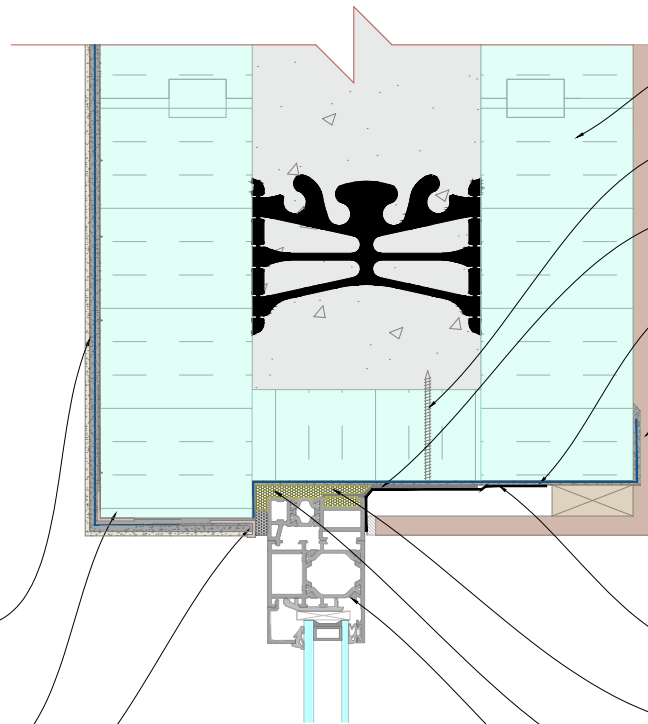
K. Millward



Tremco CPG UK Ltd,
Coupland Road,
Hindley Green,
Wigan, Lancs. WN2 4HP
www.cpg-europe.com



- 10. Dryvit ICF 500 render system
c/w basecoat, mesh. primer &
finish
- 11. Dryvit corner bead & mesh
- 12. Dryvit frameseal bead & mesh



- 1. Nudura form unit
- 2. Nudura end cap
- 3. Window fixing lug
- 4. Dryvit basecoat & mesh
- 5. Plasterboard returned
to frame
- 6. illbruck ME508 membrane
- 7. illbruck FM330 Pro Foam Airseal
- 8. illbruck Illmod TP600
- 9. Window frame

General Notes

The recommendations relating to this detail drawing provided by Tremco CPG UK Ltd are for information /guidance purposes only and do not constitute professional advice. While we strive to offer accurate and up-to-date information, Tremco CPG UK Ltd makes no warranties, expressed or implied, regarding the completeness, accuracy, reliability, or suitability of the guidance /recommendations for any particular purpose.

Tremco CPG UK Ltd shall not be held liable for any direct, indirect, incidental, special or consequential damages arising out of or in connection with the use of the guidance /recommendations provided.

All systems must comply with National Building Regulations and Standards, it is the responsibility of the Architect, Engineer and Project Designer to evaluate the information and determine its applicability to their specific situation. The Architect, Engineer and Project Designer should seek professional advice tailored to their individual circumstances before making any decisions based on the recommendations.

Tremco CPG UK Ltd reserves the right to modify or discontinue any recommendations at any time without prior notice.



Project

Standard Detail Drawing

Title

Nudura XR-35 Form Unit
Dryvit ICF 500 Render system
Window head (i3 System) with check reveal

Date

May 2025

Drg no

XRD-12

Scale

NTS

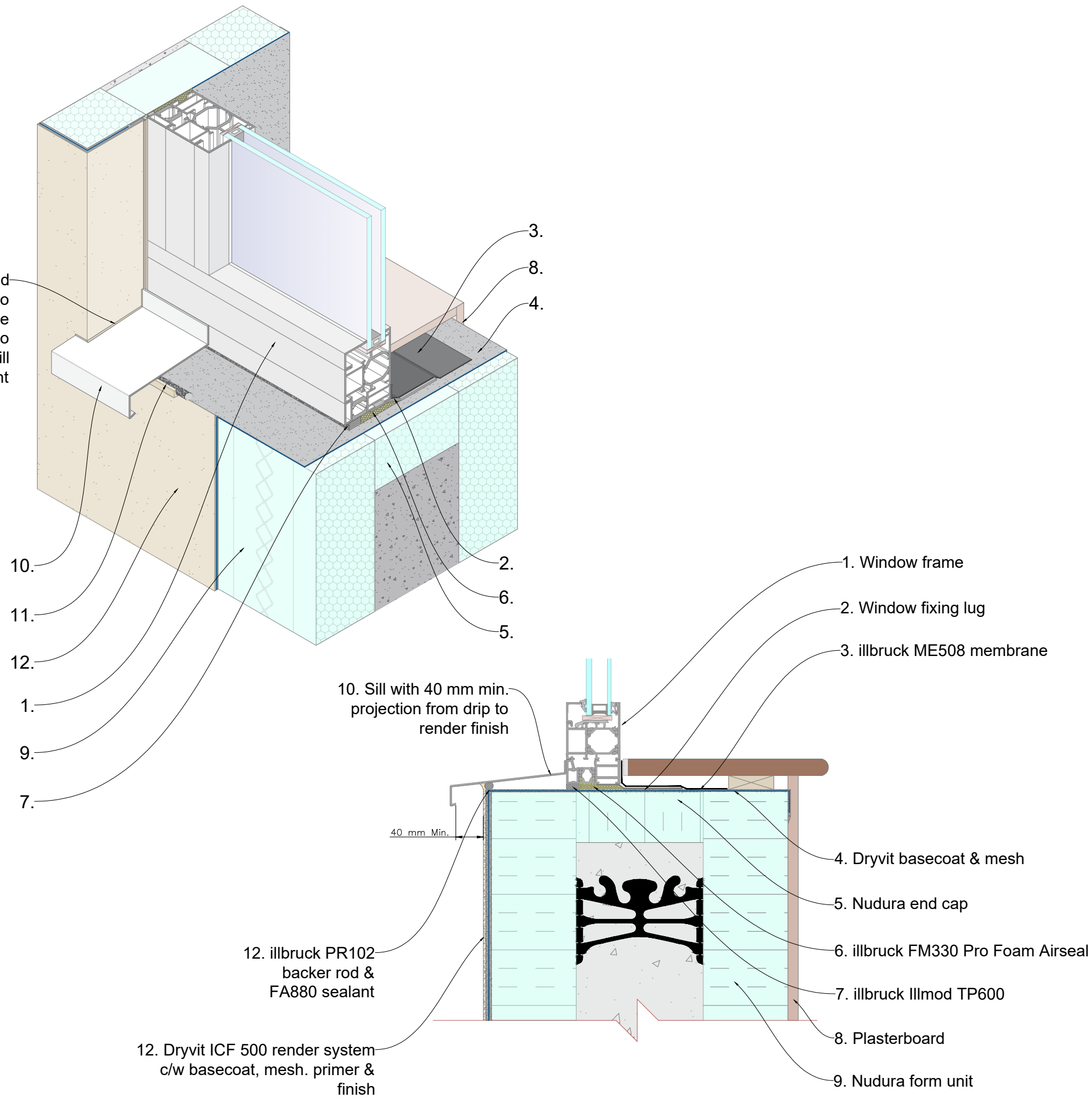
Drawn by

K. Millward



Tremco CPG UK Ltd,
Coupland Road,
Hindley Green,
Wigan, Lancs. WN2 4HP
www.cpg-europe.com

Note: A backer rod and silicone seal will need to be installed between the sill and render system to accommodate sill movement



General Notes

The recommendations relating to this detail drawing provided by Tremco CPG UK Ltd are for information /guidance purposes only and do not constitute professional advice. While we strive to offer accurate and up-to-date information, Tremco CPG UK Ltd makes no warranties, expressed or implied, regarding the completeness, accuracy, reliability, or suitability of the guidance /recommendations for any particular purpose.

Tremco CPG UK Ltd shall not be held liable for any direct, indirect, incidental, special or consequential damages arising out of or in connection with the use of the guidance /recommendations provided.

All systems must comply with National Building Regulations and Standards, it is the responsibility of the Architect, Engineer and Project Designer to evaluate the information and determine its applicability to their specific situation. The Architect, Engineer and Project Designer should seek professional advice tailored to their individual circumstances before making any decisions based on the recommendations.

Tremco CPG UK Ltd reserves the right to modify or discontinue any recommendations at any time without prior notice.



Project

Standard Detail Drawing

Title

Nudura XR-35 Form Unit
Dryvit ICF 500 Render system
Sill detail

Date

May 2025

Drg no

XRD-13

Scale

NTS

Drawn by

K. Millward



Tremco CPG UK Ltd,
Coupland Road,
Hindley Green,
Wigan, Lancs. WN2 4HP
www.cpg-europe.com

General Notes

The recommendations relating to this detail drawing provided by Tremco CPG UK Ltd are for information /guidance purposes only and do not constitute professional advice. While we strive to offer accurate and up-to-date information, Tremco CPG UK Ltd makes no warranties, expressed or implied, regarding the completeness, accuracy, reliability, or suitability of the guidance /recommendations for any particular purpose.

Tremco CPG UK Ltd shall not be held liable for any direct, indirect, incidental, special or consequential damages arising out of or in connection with the use of the guidance /recommendations provided.

All systems must comply with National Building Regulations and Standards, it is the responsibility of the Architect, Engineer and Project Designer to evaluate the information and determine its applicability to their specific situation. The Architect, Engineer and Project Designer should seek professional advice tailored to their individual circumstances before making any decisions based on the recommendations.

Tremco CPG UK Ltd reserves the right to modify or discontinue any recommendations at any time without prior notice.





Project

Standard Detail Drawing

Title

Nudura XR-35 Form Unit
Dryvit ICF 500 Render system
Door threshold detail

Date

May 2025

Drg no

XRD-14

Scale

NTS

Drawn by

K. Millward



Tremco CPG UK Ltd,
Coupland Road,
Hindley Green,
Wigan, Lancs. WN2 4HP
www.cpg-europe.com

The diagram illustrates a door threshold detail in two views: an isometric perspective view (top left) and a cross-sectional view (bottom center). The isometric view shows the threshold assembly with various layers and components labeled 1 through 14. The cross-sectional view provides a detailed look at the internal structure, including the floor screed, beam and block floor, and the various membranes and render layers. Key components include the door threshold, render stop bead, illbruck ME480 perimeter sealing membrane, illbruck ME508 applied over ME480, granular fill for drainage, Dryvit Dryflex render with finish, Nudura floor technology or equivalent, and the beam and block floor. The cross-section also shows the damp proof course linked to the damp proof membrane and cut to suit the door opening, and the Nudura end cap. The drawing includes a note about the fibercoat basecoat and another note about the render basecoat and finishes.

Note:
Fibercoat basecoat to be applied to reveals when the threshold membranes have been installed as per Nudura best practice - the basecoat has not been shown for clarity of the membrane detail

Render basecoat and finishes will not sufficiently adhere to most membranes or DPCs (including Nudura peel and stick) and is likely to fail if applied over these items.

1. Render & back to back stop bead detail to adjacent wall detail as drg XRD-03

2. Door threshold

3. Render stop bead

4. illbruck ME480 perimeter sealing membrane bonded to the threshold(**see below) and folded and bonded onto sides of reveal and lapped on to vertical face

5. illbruck ME508 applied over ME480 (to allow render application)

6. Granular fill for drainage

7. Dryvit Dryflex render with finish

8. illbruck ME508 applied over ME480 perimeter membrane to allow the application of basecoat to the reveals

9. Nudura end cap

10. Damp proof course linked to damp proof membrane & cut to suit door opening

11. Damp proof membrane linked to DPC

12. Floor screed

13. Nudura floor technology or equivalent

14. Beam and block floor

**Leading edge of illbruck ME480 pre-bonded to the threshold using illbruck SP025 applied to the foil side of the ME480 24 hours before installation.

General Notes

The recommendations relating to this detail drawing provided by Tremco CPG UK Ltd are for information /guidance purposes only and do not constitute professional advice. While we strive to offer accurate and up-to-date information, Tremco CPG UK Ltd makes no warranties, expressed or implied, regarding the completeness, accuracy, reliability, or suitability of the guidance /recommendations for any particular purpose.

Tremco CPG UK Ltd shall not be held liable for any direct, indirect, incidental, special or consequential damages arising out of or in connection with the use of the guidance /recommendations provided.

All systems must comply with National Building Regulations and Standards, it is the responsibility of the Architect, Engineer and Project Designer to evaluate the information and determine its applicability to their specific situation. The Architect, Engineer and Project Designer should seek professional advice tailored to their individual circumstances before making any decisions based on the recommendations.

Tremco CPG UK Ltd reserves the right to modify or discontinue any recommendations at any time without prior notice.



Project
Standard Detail Drawing

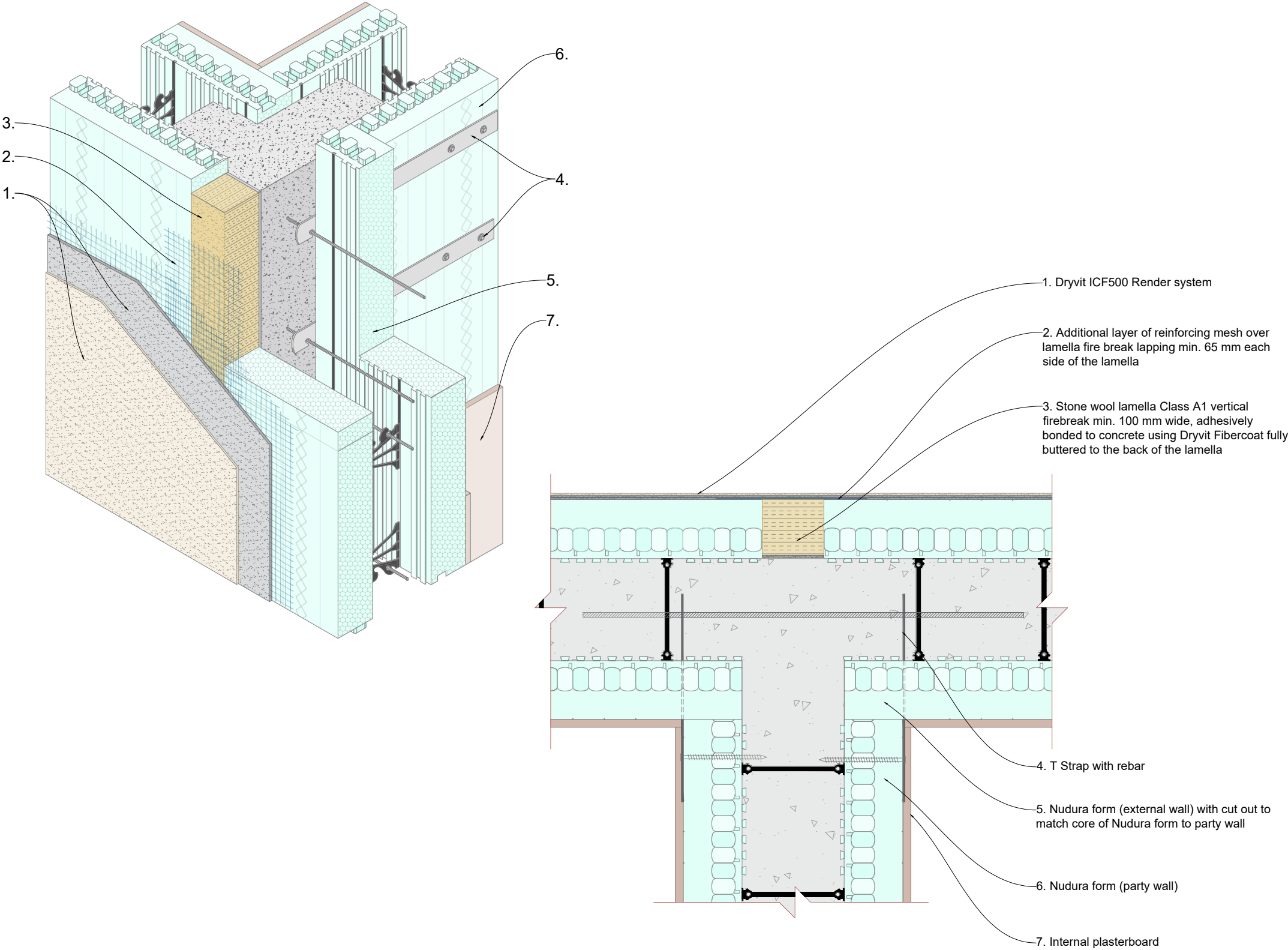
Title
Nudura XR-35 Form Unit
Dryvit ICF 500 Render system
Party wall formed with 'T' straps & vertical fire break

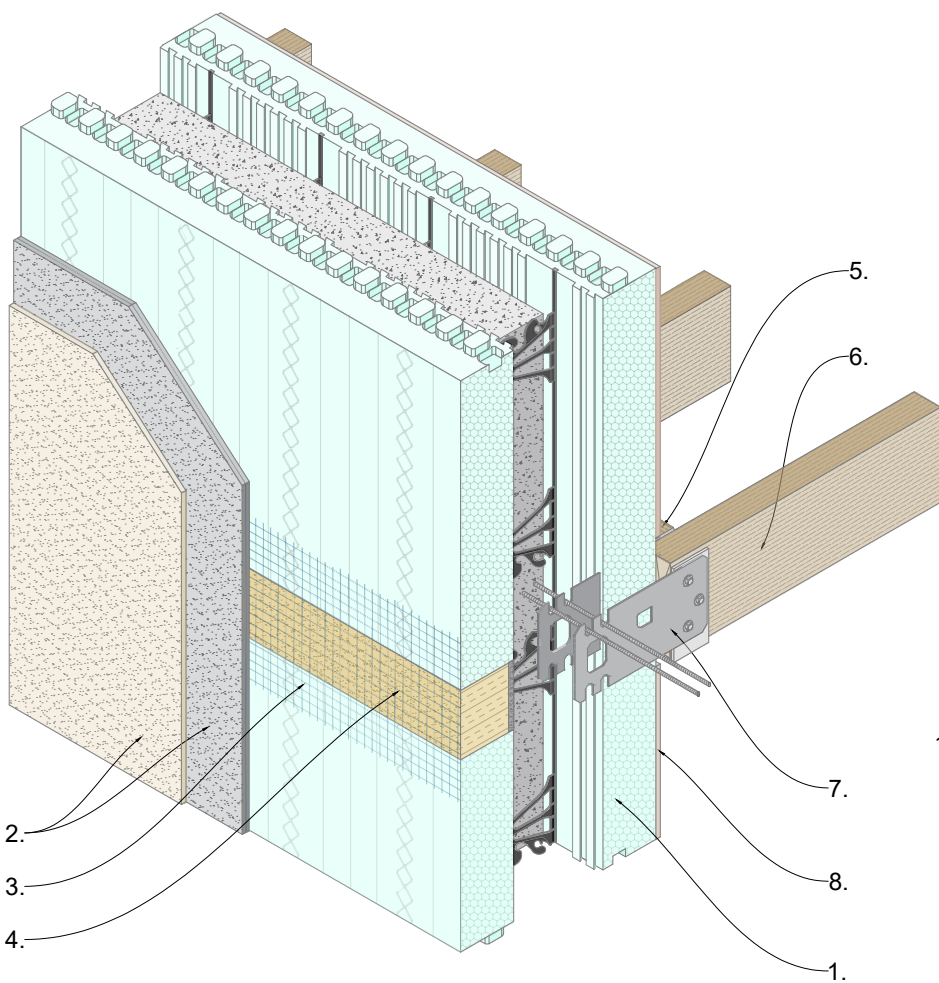
Date May 2025	Drg no XRD-15
------------------	------------------

Scale NTS	Drawn by K. Millward
--------------	-------------------------



Tremco CPG UK Ltd,
Coupland Road,
Hindley Green,
Wigan, Lancs. WN2 4HP
www.cpg-europe.com



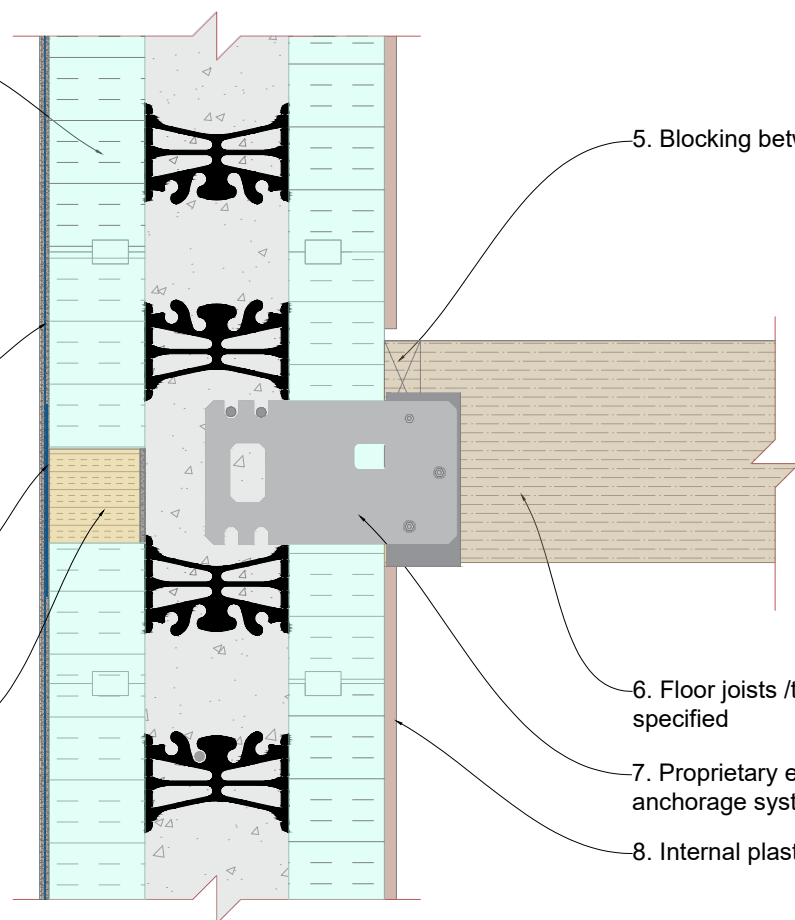


1. Nudura form unit

2. Dryvit ICF 500 render system

3. Additional layer of reinforcing mesh over lamella fire break lapping min. 65 mm each side of the lamella

4. Stone wool lamella Class A1 vertical firebreak min. 100 mm wide, adhesively bonded to concrete using Dryvit Fibercoat fully buttered to the back of the lamella



5. Blocking between joists

6. Floor joists /trusses as specified

7. Proprietary embedded joist anchorage system or equivalent

8. Internal plaster board

General Notes

The recommendations relating to this detail drawing provided by Tremco CPG UK Ltd are for information /guidance purposes only and do not constitute professional advice. While we strive to offer accurate and up-to-date information, Tremco CPG UK Ltd makes no warranties, expressed or implied, regarding the completeness, accuracy, reliability, or suitability of the guidance /recommendations for any particular purpose.

Tremco CPG UK Ltd shall not be held liable for any direct, indirect, incidental, special or consequential damages arising out of or in connection with the use of the guidance /recommendations provided.

All systems must comply with National Building Regulations and Standards, it is the responsibility of the Architect, Engineer and Project Designer to evaluate the information and determine its applicability to their specific situation. The Architect, Engineer and Project Designer should seek professional advice tailored to their individual circumstances before making any decisions based on the recommendations.

Tremco CPG UK Ltd reserves the right to modify or discontinue any recommendations at any time without prior notice.



Project

Standard Detail Drawing

Title

Nudura XR-35 Form Unit
Dryvit ICF 500 Render system
Intermediate floor /ceiling with
horizontal fire break

Date
May 2025

Drg no
XRD-16

Scale
NTS

Drawn by
K. Millward



Tremco CPG UK Ltd,
Coupland Road,
Hindley Green,
Wigan, Lancs. WN2 4HP
www.cpg-europe.com

General Notes

The recommendations relating to this detail drawing provided by Tremco CPG UK Ltd are for information /guidance purposes only and do not constitute professional advice. While we strive to offer accurate and up-to-date information, Tremco CPG UK Ltd makes no warranties, expressed or implied, regarding the completeness, accuracy, reliability, or suitability of the guidance /recommendations for any particular purpose.

Tremco CPG UK Ltd shall not be held liable for any direct, indirect, incidental, special or consequential damages arising out of or in connection with the use of the guidance /recommendations provided.

All systems must comply with National Building Regulations and Standards, it is the responsibility of the Architect, Engineer and Project Designer to evaluate the information and determine its applicability to their specific situation. The Architect, Engineer and Project Designer should seek professional advice tailored to their individual circumstances before making any decisions based on the recommendations.

Tremco CPG UK Ltd reserves the right to modify or discontinue any recommendations at any time without prior notice.



Project

Standard Detail Drawing

Title

Nudura XR-35 Form Unit
Dryvit ICF 500 Render system
Internal stud wall

Date

May 2025

Drg no

XRD-17

Scale

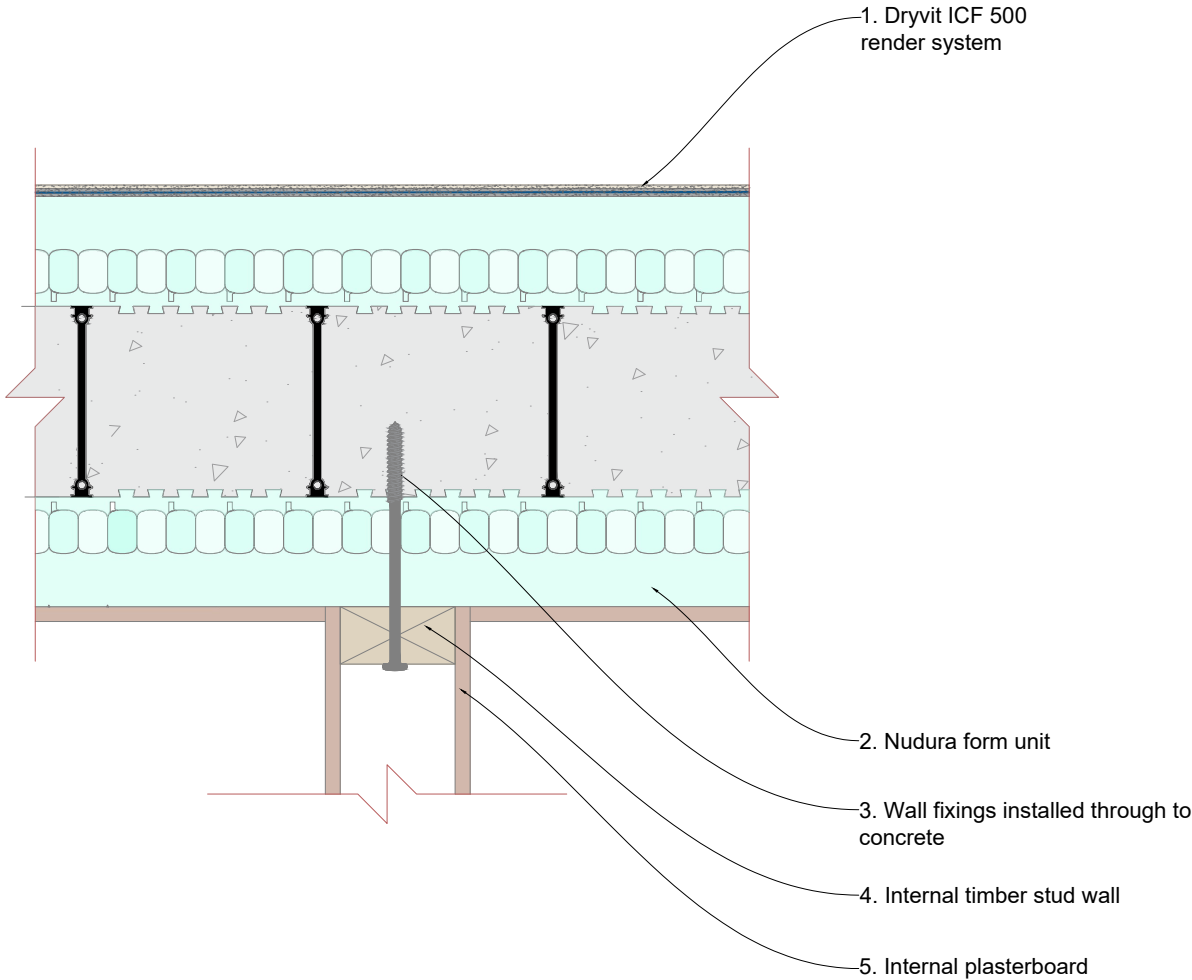
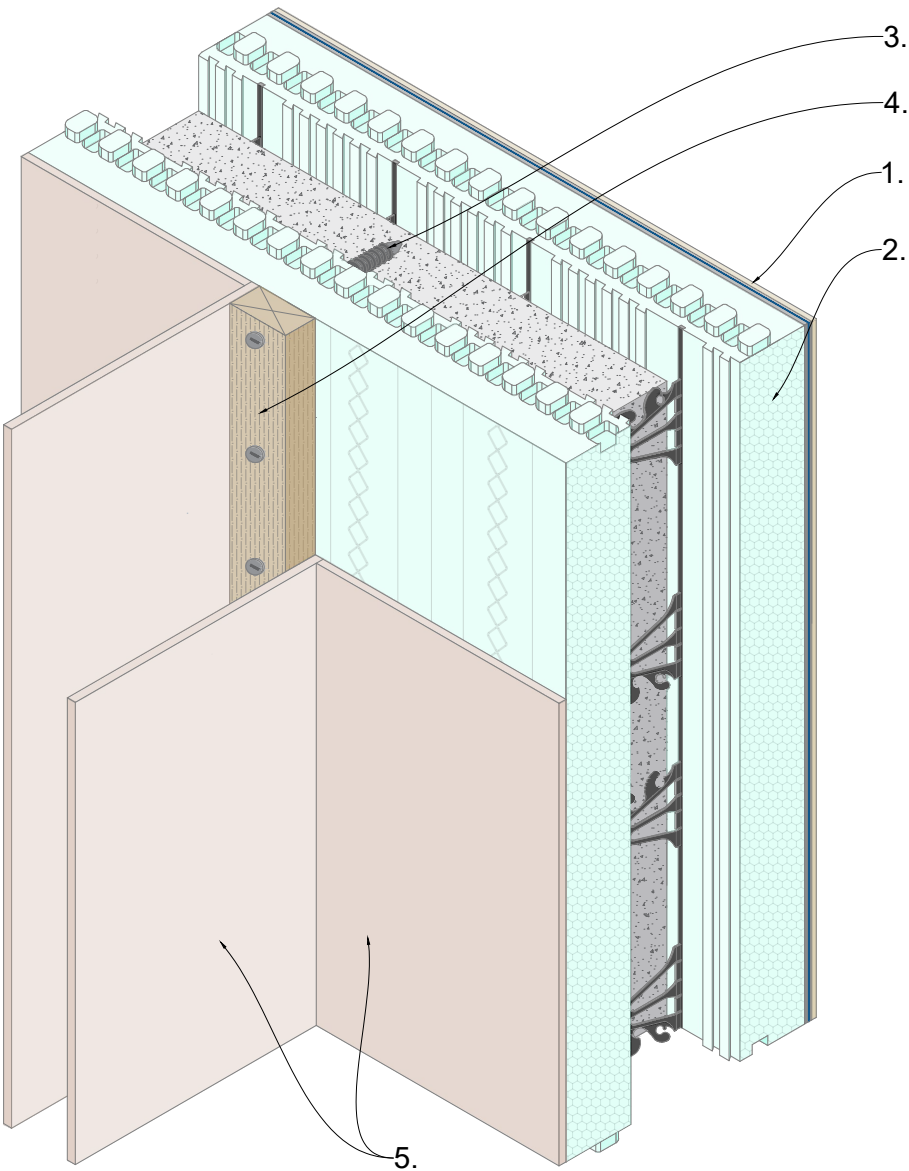
NTS

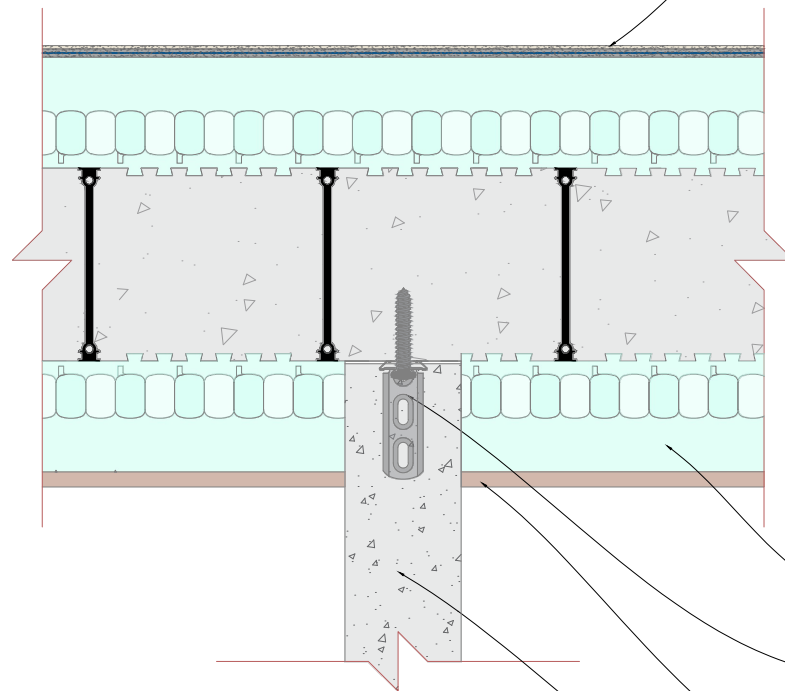
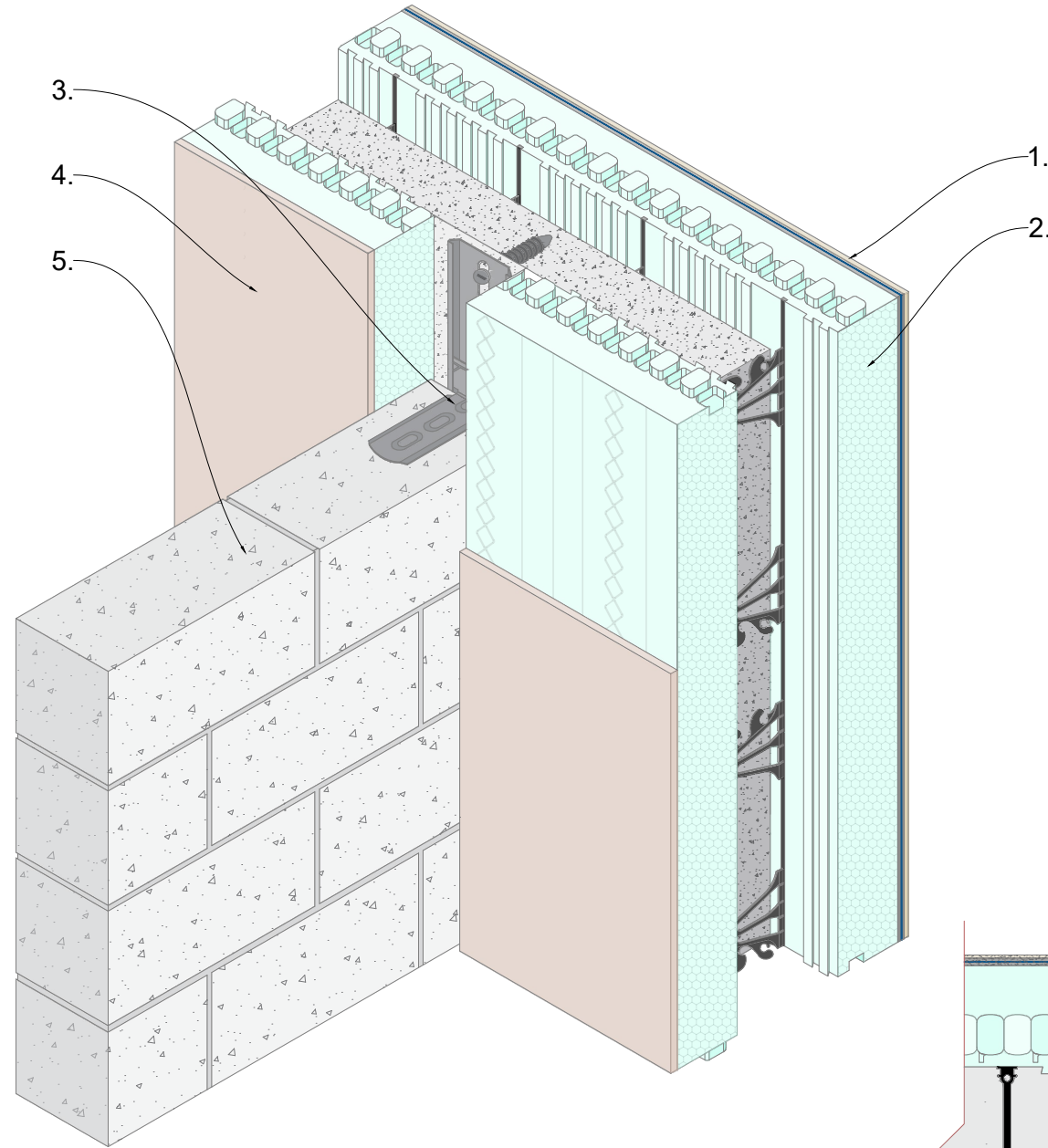
Drawn by

K. Millward



Tremco CPG UK Ltd,
Coupland Road,
Hindley Green,
Wigan, Lancs. WN2 4HP
www.cpg-europe.com





1. Dryvit ICF 500 render system

2. Nudura form unit

3. Wall starter system fixed to concrete

4. Internal plasterboard

5. Internal blockwork wall

General Notes

The recommendations relating to this detail drawing provided by Tremco CPG UK Ltd are for information /guidance purposes only and do not constitute professional advice. While we strive to offer accurate and up-to-date information, Tremco CPG UK Ltd makes no warranties, expressed or implied, regarding the completeness, accuracy, reliability, or suitability of the guidance /recommendations for any particular purpose.

Tremco CPG UK Ltd shall not be held liable for any direct, indirect, incidental, special or consequential damages arising out of or in connection with the use of the guidance /recommendations provided.

All systems must comply with National Building Regulations and Standards, it is the responsibility of the Architect, Engineer and Project Designer to evaluate the information and determine its applicability to their specific situation. The Architect, Engineer and Project Designer should seek professional advice tailored to their individual circumstances before making any decisions based on the recommendations.

Tremco CPG UK Ltd reserves the right to modify or discontinue any recommendations at any time without prior notice.



Project

Standard Detail Drawing

Title

Nudura XR-35 Form Unit
Dryvit ICF 500 Render system
Internal block wall

Date

May 2025

Drg no

XRD-18

Scale

NTS

Drawn by

K. Millward



Tremco CPG UK Ltd,
Coupland Road,
Hindley Green,
Wigan, Lancs. WN2 4HP
www.cpg-europe.com

General Notes

The recommendations relating to this detail drawing provided by Tremco CPG UK Ltd are for information /guidance purposes only and do not constitute professional advice. While we strive to offer accurate and up-to-date information, Tremco CPG UK Ltd makes no warranties, expressed or implied, regarding the completeness, accuracy, reliability, or suitability of the guidance /recommendations for any particular purpose.

Tremco CPG UK Ltd shall not be held liable for any direct, indirect, incidental, special or consequential damages arising out of or in connection with the use of the guidance /recommendations provided.

All systems must comply with National Building Regulations and Standards, it is the responsibility of the Architect, Engineer and Project Designer to evaluate the information and determine its applicability to their specific situation. The Architect, Engineer and Project Designer should seek professional advice tailored to their individual circumstances before making any decisions based on the recommendations.

Tremco CPG UK Ltd reserves the right to modify or discontinue any recommendations at any time without prior notice.



Project

Standard Detail Drawing

Title

Nudura XR-35 Form Unit
Dryvit ICF 500 Render system
Nudura extension on existing property

Date

May 2025

Drg no

XRD-19

Scale

NTS

Drawn by

K. Millward



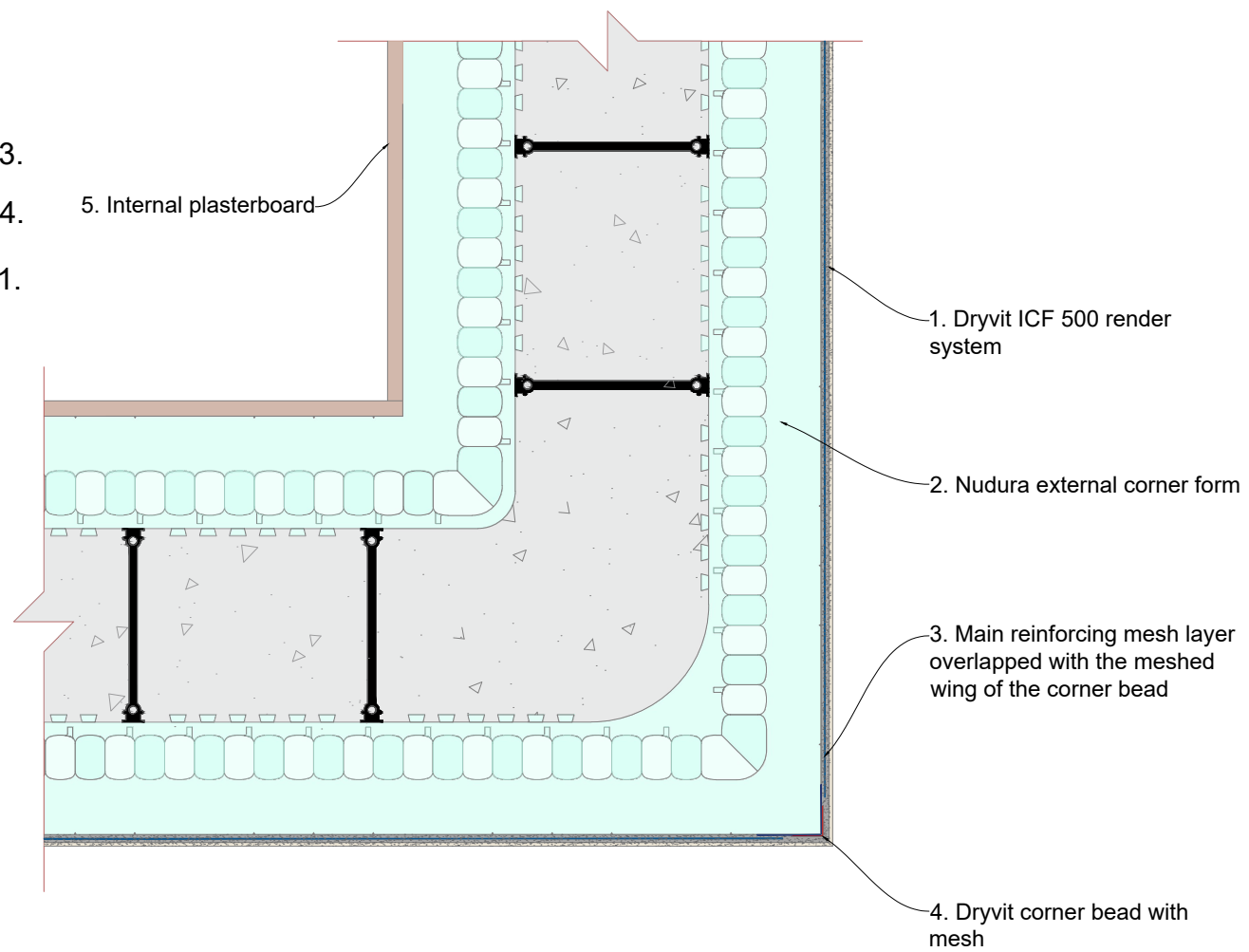
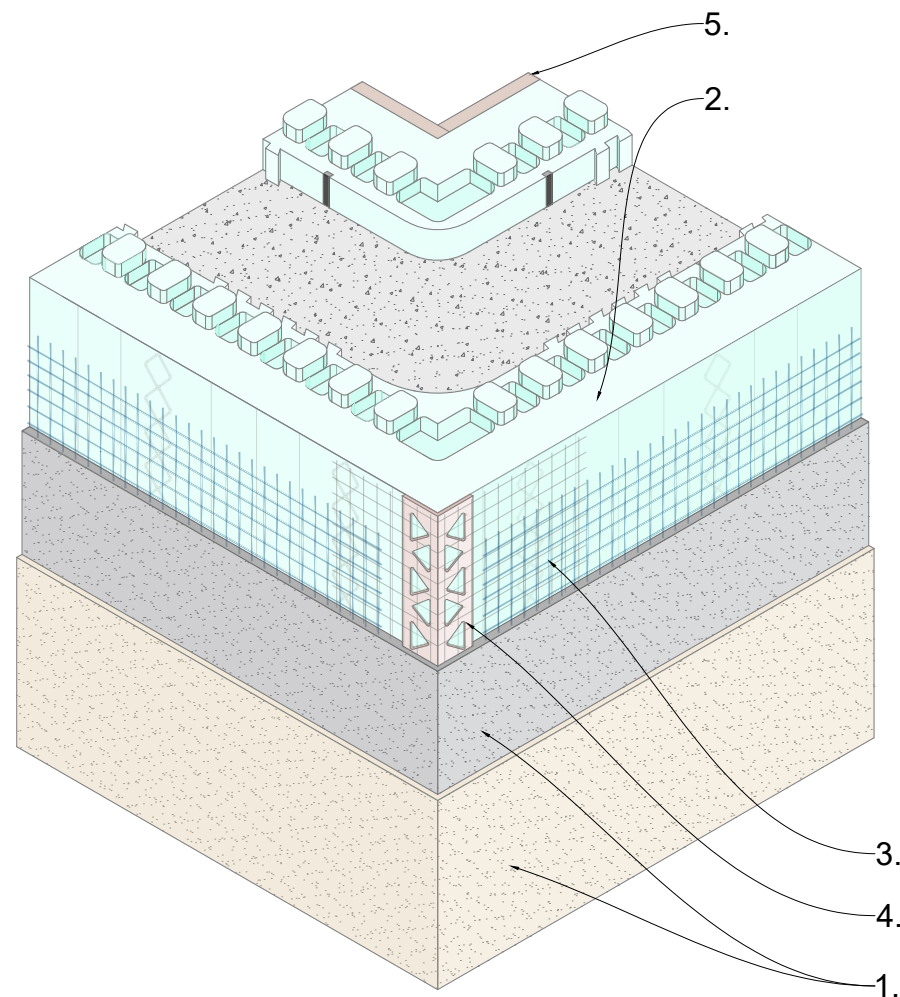
Construction Products Group

Tremco CPG UK Ltd,
Coupland Road,
Hindley Green,
Wigan, Lancs. WN2 4HP
www.cpg-europe.com

The diagram illustrates a cross-section of a wall extension. On the left, existing brickwork (7) is shown. A new concrete wall (2) is being added, separated from the existing wall by a membrane (5). The new concrete wall is finished with a wall starter system (6). The interior of the new wall is filled with illbruck illmod TP600 with FA880 sealant (8). A render stop bead (9) is applied to the interior face of the new concrete wall. The interior face is then finished with a new interior plasterboard (4). The exterior face of the new concrete wall is finished with a Dryvit ICF 500 render system (10). The exterior face of the existing brickwork is finished with a Nudura form unit (11).

Labels and callouts:

- 1. Existing interior plasterboard
- 2. Existing blockwork
- 3. illbruck illmod TP600 with FA880 sealant
- 4. New interior plasterboard
- 5. Membrane between existing wall and new concrete
- 6. Wall starter system fixed to existing wall
- 7. Existing brickwork
- 8. illbruck illmod TP600 with FA880 sealant
- 9. Render stop bead
- 10. Dryvit ICF 500 render system
- 11. Nudura form unit



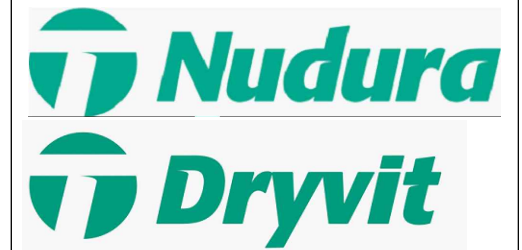
General Notes

The recommendations relating to this detail drawing provided by Tremco CPG UK Ltd are for information /guidance purposes only and do not constitute professional advice. While we strive to offer accurate and up-to-date information, Tremco CPG UK Ltd makes no warranties, expressed or implied, regarding the completeness, accuracy, reliability, or suitability of the guidance /recommendations for any particular purpose.

Tremco CPG UK Ltd shall not be held liable for any direct, indirect, incidental, special or consequential damages arising out of or in connection with the use of the guidance /recommendations provided.

All systems must comply with National Building Regulations and Standards, it is the responsibility of the Architect, Engineer and Project Designer to evaluate the information and determine its applicability to their specific situation. The Architect, Engineer and Project Designer should seek professional advice tailored to their individual circumstances before making any decisions based on the recommendations.

Tremco CPG UK Ltd reserves the right to modify or discontinue any recommendations at any time without prior notice.



Project

Standard Detail Drawing

Title

Nudura XR-35 Form Unit
Dryvit ICF 500 Render system
External corner detail

Date

May 2025

Drg no

XRD-20

Scale

NTS

Drawn by

K. Millward



Tremco CPG UK Ltd,
Coupland Road,
Hindley Green,
Wigan, Lancs. WN2 4HP
www.cpg-europe.com

General Notes

The recommendations relating to this detail drawing provided by Tremco CPG UK Ltd are for information /guidance purposes only and do not constitute professional advice. While we strive to offer accurate and up-to-date information, Tremco CPG UK Ltd makes no warranties, expressed or implied, regarding the completeness, accuracy, reliability, or suitability of the guidance /recommendations for any particular purpose.

Tremco CPG UK Ltd shall not be held liable for any direct, indirect, incidental, special or consequential damages arising out of or in connection with the use of the guidance /recommendations provided.

All systems must comply with National Building Regulations and Standards, it is the responsibility of the Architect, Engineer and Project Designer to evaluate the information and determine its applicability to their specific situation. The Architect, Engineer and Project Designer should seek professional advice tailored to their individual circumstances before making any decisions based on the recommendations.

Tremco CPG UK Ltd reserves the right to modify or discontinue any recommendations at any time without prior notice.



Project

Standard Detail Drawing

Title

Nudura XR-35 Form Unit
Dryvit ICF 500 Render system
Internal corner detail

Date

May 2025

Drg no

XRD-21

Scale

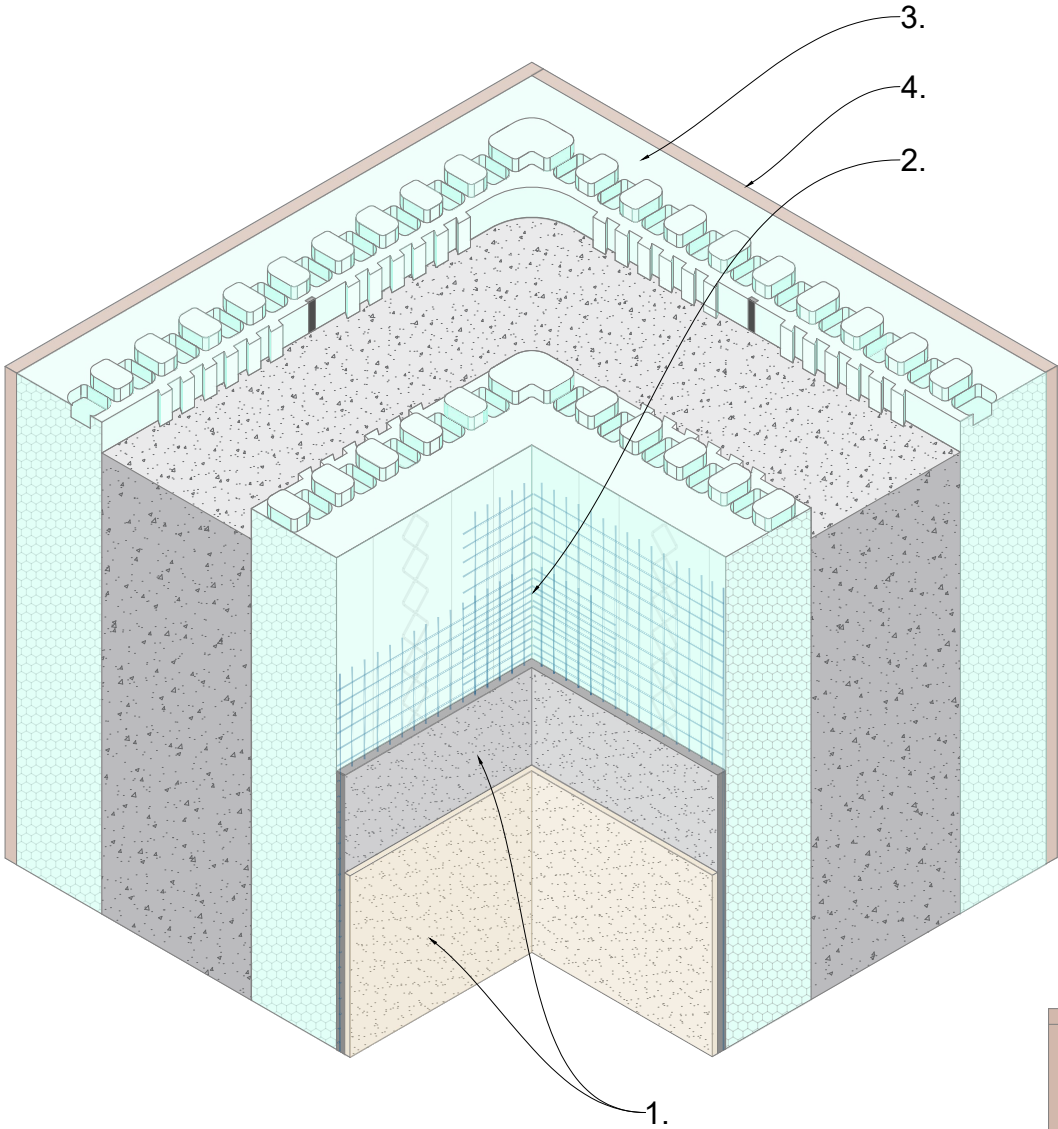
NTS

Drawn by

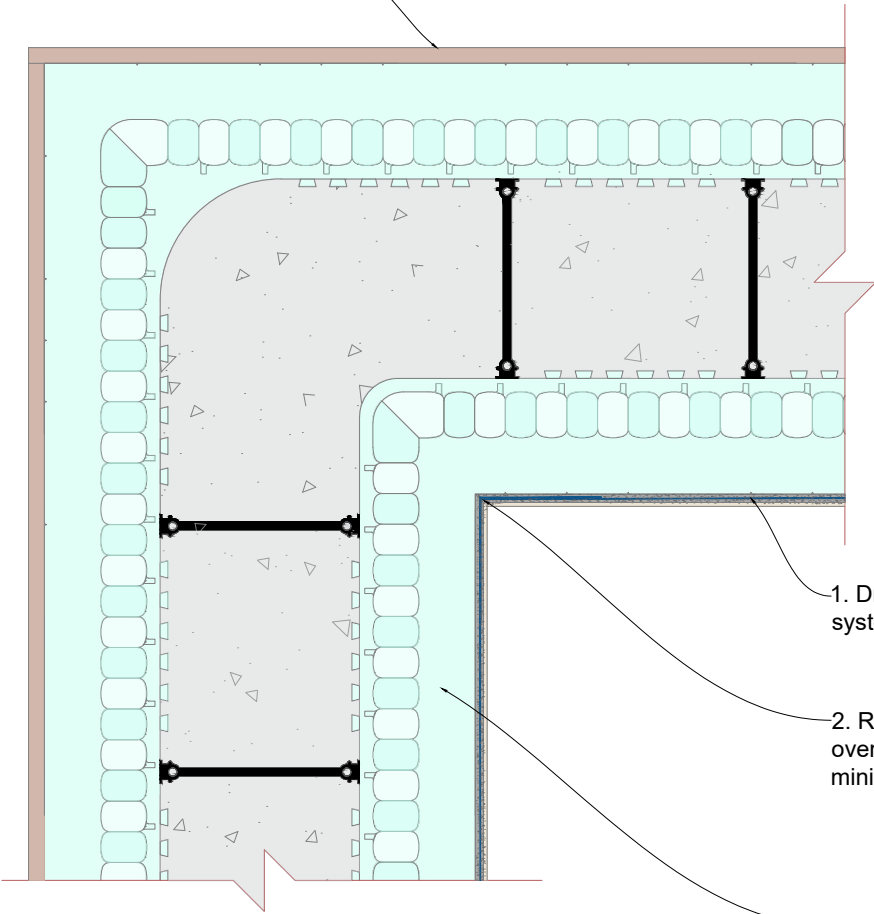
K. Millward



Tremco CPG UK Ltd,
Coupland Road,
Hindley Green,
Wigan, Lancs. WN2 4HP
www.cpg-europe.com



4. Internal plasterboard

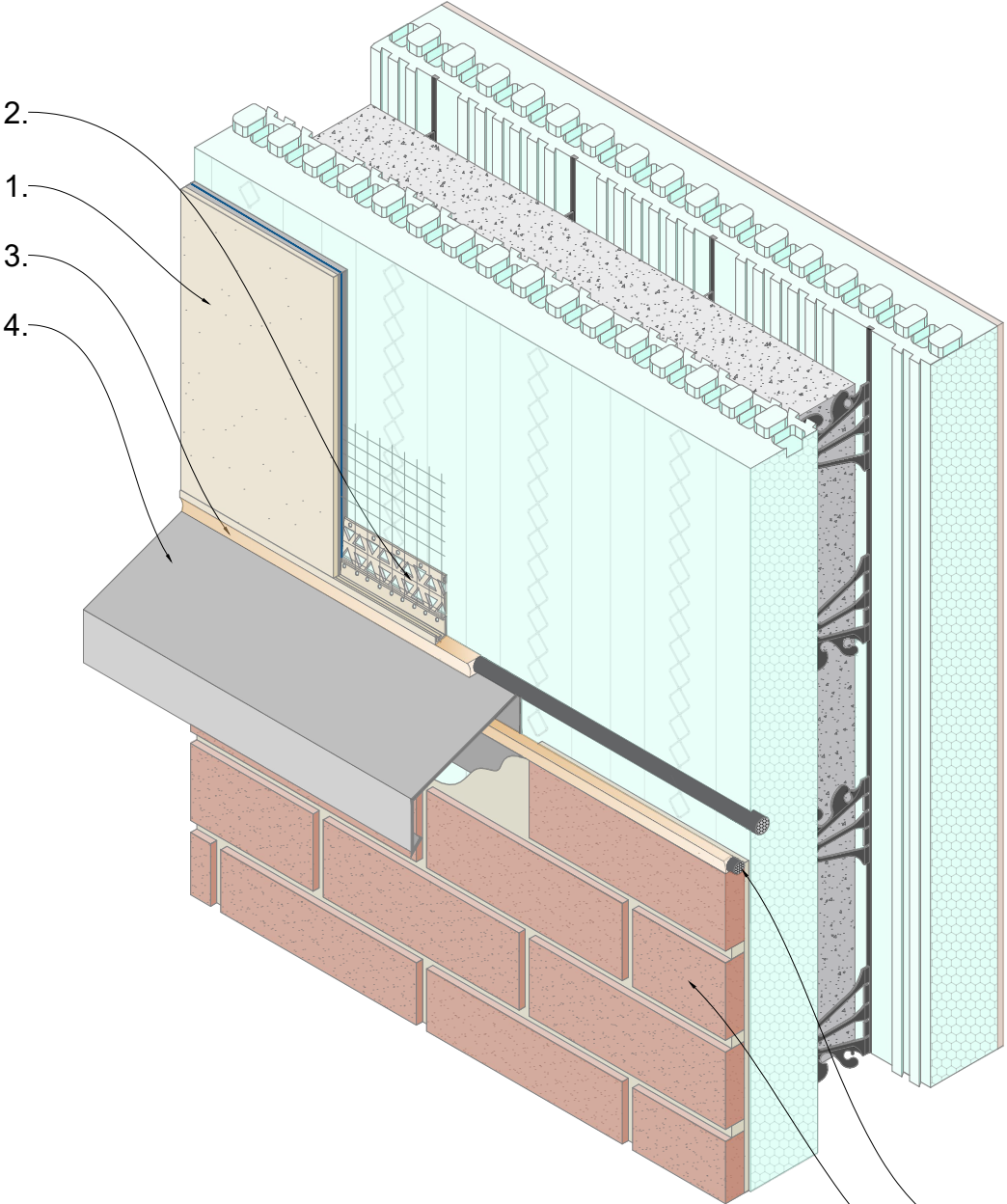


1. Dryvit ICF 500 render system

2. Reinforcing mesh layers to overlap into corner by a minimum of 100 mm

3. Nudura internal corner form

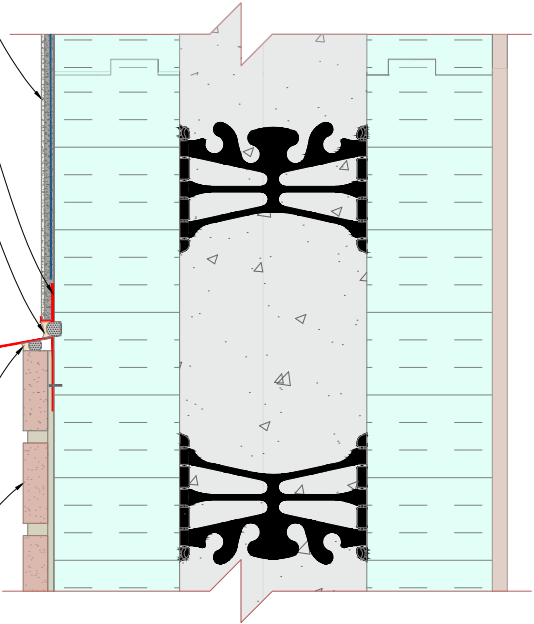
General Notes	
<p>The recommendations relating to this detail drawing provided by Tremco CPG UK Ltd are for information /guidance purposes only and do not constitute professional advice. While we strive to offer accurate and up-to-date information, Tremco CPG UK Ltd makes no warranties, expressed or implied, regarding the completeness, accuracy, reliability, or suitability of the guidance /recommendations for any particular purpose.</p> <p>Tremco CPG UK Ltd shall not be held liable for any direct, indirect, incidental, special or consequential damages arising out of or in connection with the use of the guidance /recommendations provided.</p> <p>All systems must comply with National Building Regulations and Standards, it is the responsibility of the Architect, Engineer and Project Designer to evaluate the information and determine its applicability to their specific situation. The Architect, Engineer and Project Designer should seek professional advice tailored to their individual circumstances before making any decisions based on the recommendations.</p> <p>Tremco CPG UK Ltd reserves the right to modify or discontinue any recommendations at any time without prior notice.</p>	
	
Project Standard Detail Drawing	
Title Nudura XR-35 Form Unit Dryvit ICF 500 Render system Render /brick slip transition Render above brick slips	
Date May 2025	Drg no XRD-22
Scale NTS	Drawn by K. Millward
	
Tremco CPG UK Ltd, Coupland Road, Hindley Green, Wigan, Lancs. WN2 4HP www.cpg-europe.com	

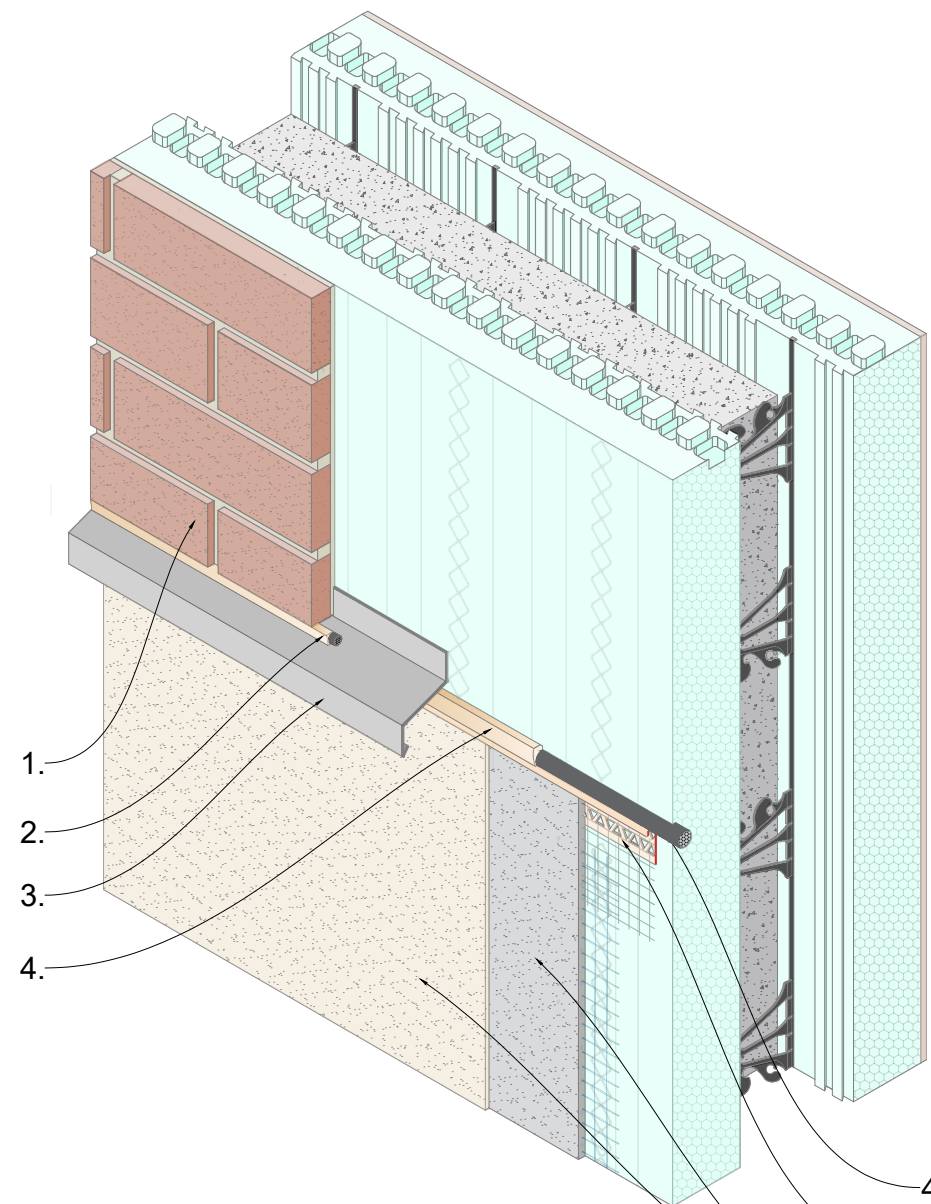


Note:
 Render should not be installed over any upstands or downstands of trims /flashings, as any movement of the trim could result in cracking of the render.

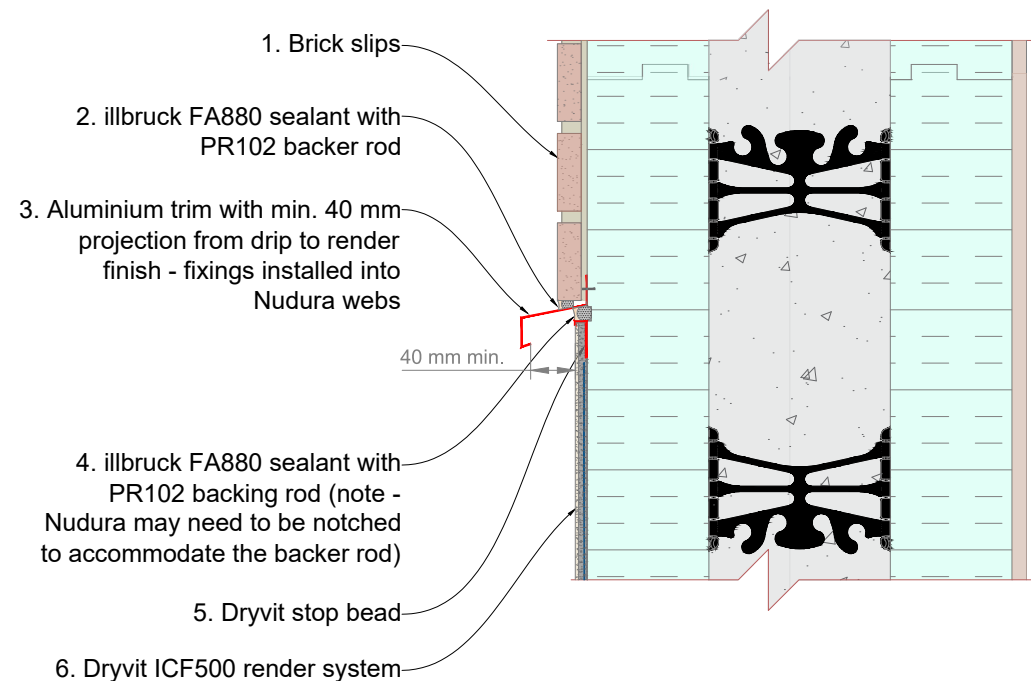
- 1. Dryvit ICF500 render system
- 2. Dryvit stop bead
- 3. illbruck FA880 sealant with PR102 backing rod (note - Nudura may need to be notched to accommodate the backer rod)
- 4. Aluminium trim - fixings installed into Nudura webs

- 5. illbruck FA880 sealant with PR102 backer rod
- 6. Brick slips





Note:
Render should not be installed over any upstands or downstands of trims /flashings, as any movement of the trim could result in cracking of the render.



General Notes

The recommendations relating to this detail drawing provided by Tremco CPG UK Ltd are for information /guidance purposes only and do not constitute professional advice. While we strive to offer accurate and up-to-date information, Tremco CPG UK Ltd makes no warranties, expressed or implied, regarding the completeness, accuracy, reliability, or suitability of the guidance /recommendations for any particular purpose.

Tremco CPG UK Ltd shall not be held liable for any direct, indirect, incidental, special or consequential damages arising out of or in connection with the use of the guidance /recommendations provided.

All systems must comply with National Building Regulations and Standards, it is the responsibility of the Architect, Engineer and Project Designer to evaluate the information and determine its applicability to their specific situation. The Architect, Engineer and Project Designer should seek professional advice tailored to their individual circumstances before making any decisions based on the recommendations.

Tremco CPG UK Ltd reserves the right to modify or discontinue any recommendations at any time without prior notice.



Project

Standard Detail Drawing

Title

Nudura XR-35 Form Unit
Dryvit ICF 500 Render system
Render /brick slip transition
Render below brick slips

Date

May 2025

Drg no

XRD-23

Scale

NTS

Drawn by

K. Millward



Tremco CPG UK Ltd,
Coupland Road,
Hindley Green,
Wigan, Lancs. WN2 4HP
www.cpg-europe.com